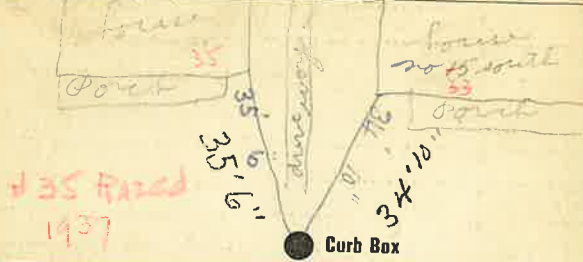


35 SOUTH

Labor and Material Report May 17 1938

M³⁵ 14 South St.



35 RAZED 1937

Main Elev. of Main at tap 5.4

Gate at 34' to main Gate at

Curb Box

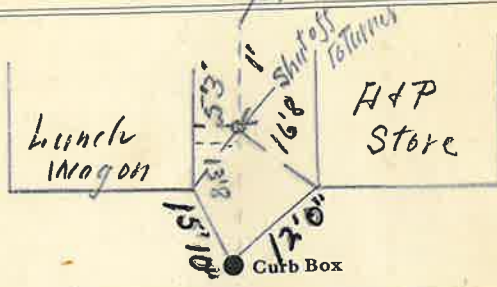
South

St. Pl. Ave. No. 35

Name of Owner

Lunch Wagon

Labor and Mat'l. Report April 6 1943



Main Elev. of Main at tap

Gate at Gate at

Curb Box

Shut off at main

Shut off for lunch wagon shop

Labor and Materials

Copper } Connection \$
 Lead }
 Curb { Cock } in. \$
 { Valve }
 { T. S. & V. }
 Service Box { Short 3 1/2 x 4 1/2 } \$
 Old returned { Long 4 1/2 x 5 1/2 }
 { Buff. or Rdway }
 3/4 Ft. 3/4 in. { Copper } Pipe at \$ 7.48
 { Galv. Iron }
 { Cast Iron }
 Nipples..... in. at \$
 Bushings..... to in. at \$
 Red'g } Couplings to in. at \$
 Inc'g }
 Union..... in. at \$
 Meter..... in. at \$
 Lbs Br. Stone at \$
 Lbs. Sand at \$
 Bags Cement at \$
 Paving Brick { Mack } at \$
 { Red }
 { Asphalt }
 Lead Joints at \$
 Leadite Joints at \$
 Hrs. Foreman at \$
 Hrs. Common Labor at \$
 Hrs. Common Labor at \$
 Hrs. Mason at \$
 Hrs. Mason's Helper at \$
 Hrs. Compressor at \$
 Compensation Ins. \$
 Trucking \$
 Builders' Use of Water \$

Total \$.....

LABOR AND MATERIALS

Copper } Connection \$
 Lead }
 Curb { Cock } in. \$
 { Valve }
 { T. S. & V. }
 Service Box { Short 3 1/2 x 4 1/2 } \$
 Old returned { Long 4 1/2 x 5 1/2 }
 { Buffor Rdway }
 Ft..... in. { Copper } Pipe at \$
 { Galv Iron }
 { Cast Iron }
 Nipples..... in. at \$
 Bushings..... to in. at \$
 Red'g } Couplings to in. at \$
 Inc'g }
 Union..... in. at \$
 Meter..... in. at \$
 Lead Joints at \$
 Leadite Joints at \$
 Hrs. Foreman at \$
 Hrs. Chauffeur at \$
 Hrs. Tapper at \$
 Hrs. Labor at \$
 Hrs. Labor at \$
 Hrs. Compressor at \$
 Compensation Ins. \$
 Trucking \$
 Builders Use of Water \$
 \$
 \$
 \$
 \$
 \$
 \$