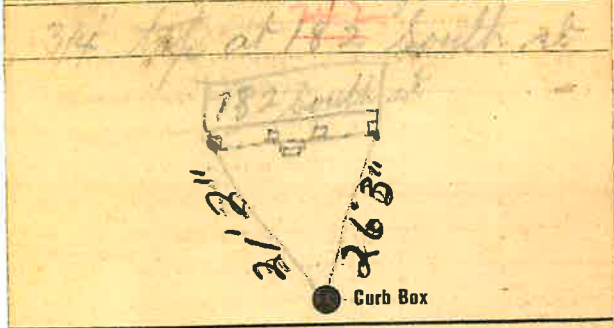


Labor and Materials

1	Copper } Connection ^{3/4}	\$
	Lead	
1	Curb { Cock } ^{3/4} in.	\$
	{ Valve } T.S. & V.	
1	Service Box { Short 3 1/2 x 4 1/2 } Old returned { Long 4 1/2 x 5 } Buff. or Rdway	\$
9	Ft. ^{3/4} in. { Copper } Pipe at	\$
	{ Galv. Iron } { Cast Iron }	
	Nipples..... in. at.....	\$
	Bushings..... to..... in. at.....	\$
	Red'g } Couplings..... to..... in. at.....	\$
	Inc'g }	
	Union..... in. at.....	\$
	Meter..... in. at.....	\$
	Lbs. Br. Stone at.....	\$
	Lbs. Sand at.....	\$
	Bags Cement at.....	\$
	Paving Brick { Mack } at.....	\$
	{ Red }	
	{ Asphalt }	
	Lead Joints at.....	\$
	Leadite Joints at.....	\$
2	Hrs. Foreman at.....	\$ 1.25
	Hrs. Common Labor at.....	\$
	Hrs. Common Labor at.....	\$
	Hrs. Mason at.....	\$
	Hrs. Mason's Helper at.....	\$
	Hrs. Compressor at.....	\$
	Compensation Ins.....	\$ 0.3
	Trucking.....	\$
	Builders' Use of Water.....	\$
	Total \$	

28-23 242 50.071
 Labor and Material Report Nov 12 1928



6" Main Elev. of Main at tap 4 1/4

Gate at ● ^{9'} to MAIN
 3/4" COPPER ● Gate at

● Curb Box

TAX ID# 309.16-3-15