

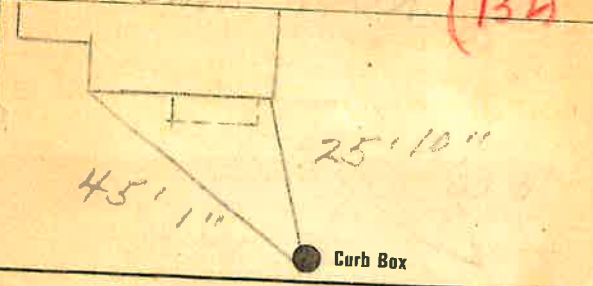
**Labor and Materials**

Lead } Connection	<del>3/4</del>	\$ 2.70
Curb } Cock Valve } T.S. & V. }	in. <del>3/4</del>	\$ 2.39
Service Box } Short 3/4x4 1/2 }		\$ 1.55
Old returned } Long 4 1/2x5 1/2 }		
Ft. } in. } Copper Galy. Iron } Pipe at	<del>3/4</del>	\$ 2.43
Nipples	in. at	\$
Bushings	to in. at	\$
Red'g } Inc'g }	Couplings to in. at	\$
Union	in. at	\$
Meter	in. at	\$
Lbs. Br. Stone	at	\$
Lbs. Sand	at	\$
Bags Cement	at	\$
Paving Brick } Mack } Red } Asphalt }	at	\$
Lead Joints	at	\$
Leadite Joints	at	\$
3 Hrs. Foreman	at	\$ 1.88
1 1/2 Hrs. Common Labor	at	\$ 1.20
Hrs. Common Labor	at	\$
Hrs. Mason	at	\$
Hrs. Mason's Helper	at	\$
Hrs. Compressor	at	\$
Compensation Ins.		\$ 28
Trucking		\$ 1.00
Builders' Use of Water	Patrol	\$ 25.00
Total		\$ 44.43

**Labor and Material Report**

1930

132 SOUTH  
88 South Street (132)



10 Main  
Elev of Main at tap  
Gate at ● Gate at ●  
9' to MAIN  
3/4" COPPER  
● Curb Box

Old Tap disconnected  
cut in new stop  
on their pipe  
8-22-62,

TAX ID# 309.36-2-14