

Labor and Materials

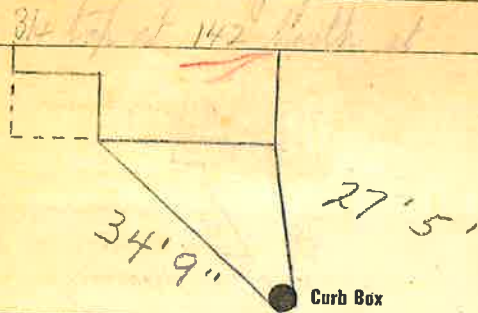
1	Copper } Connection <sup>3/4"</sup>	\$ 2.60
	Lead	
1	Curb } Cock Valve } <sup>3/4"</sup> in.	\$ 2.27
1	Service Box } Short <sup>3/4" x 4 1/2"</sup>	\$ 1.38
13	Old returned } Long <sup>4 1/2" x 5 1/2"</sup>	
8	Ft. <sup>3/4"</sup> in. } Copper Galv. Iron } Pipe at	\$ 1.44
	Nipples..... in. at.....	\$
	Bushings..... to..... in. at.....	\$
	Red'g } Couplings..... to..... in. at.....	\$
	Inc'g }	
	Union..... in. at.....	\$
	Meter..... in. at.....	\$
	Lbs. Br. Stone at.....	\$
	Lbs. Sand at.....	\$
	Bags Cement at.....	\$
	Paving Brick } Mack } at.....	\$
	Lead Joints at.....	\$
	Leadite Joints at.....	\$
5	Hrs. Foreman at.....	\$ 3.13
2	Hrs. Common Labor at <sup>Tapper</sup>	\$ 1.00
12	Hrs. Common Labor at.....	\$ 5.40
	Hrs. Mason at.....	\$
	Hrs. Mason's Helper at.....	\$
1 1/2	Hrs. Compressor at.....	\$ 1.50
	Compensation Ins.....	\$ .29
	Trucking.....	\$ 1.00
	Builders' Use of Water <sup>Patch</sup>	\$ 23.00

Total \$ 43.01

31-132 142 SOUTH

Labor and Material Report

19 31



10" Main

Elev of Main at tap 4.11

Gate at 13' to main

3/4" copper

Curb Box

Old tap shut off

Curb box set back

5' — 1962

TAX ID# 309.12-3-2