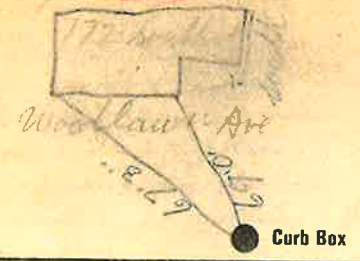


Labor and Materials

1	Copper Lead	Connection	3/4"	\$	2.60
1	Curb	Cock Valve T.S. & V.	3/4" in.	\$	2.27
1	Service Box	Short 3/4" x 1/4"		\$	1.38
	Old returned	Long 1 1/2" x 5/8"		\$	
		Buff. or Rdway		\$	
28	Pt. 3/4" in.	Copper Galv. Iron Cast Iron	Pipe at	\$	5.04
	Nipples	in. at		\$	
	Bushings	to in. at		\$	
	Red'g Inc'g	Couplings	to in. at	\$	
	Union	in. at		\$	
	Meter	in. at		\$	
	Lbs. Br. Stone	at		\$	
	Lbs. Sand	at		\$	
	Bags Cement	at		\$	
	Paving Brick	Mack Red Asphalt	at	\$	
	Lead Joints	at		\$	
	Leadite Joints	at		\$	
7	Hrs. Foreman	at		\$	4.38
21	Hrs. Common Labor	at		\$	9.45
	Hrs. Common Labor	at		\$	
	Hrs. Mason	at		\$	
	Hrs. Mason's Helper	at		\$	
1	Hrs. Compressor	at		\$	1.50
	Compensation Ins.			\$.42
	Trucking			\$	2.-
	Builders' Use of Water	Pital		\$	28.-
				Total \$	57.04

31-65 172 SOUTH
 Labor and Material Report May 28 1931

4/4 tap at 172 South St

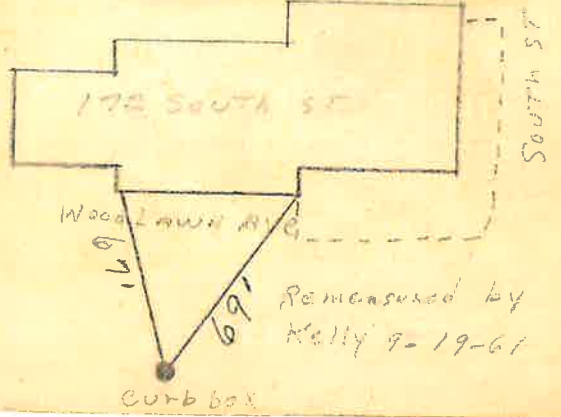


TAX ID # 309.12-11-32

4" Main Elev of Main at tap 411



Old tap to be shut off



Remasured by Kelly 9-19-61