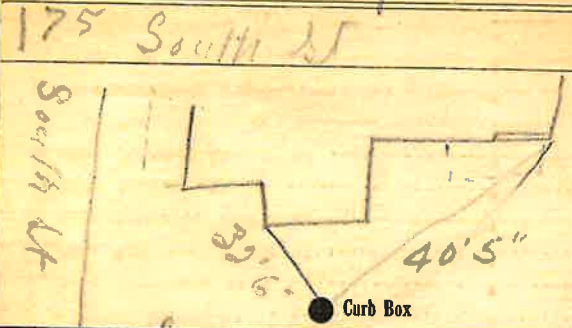


Labor and Materials

Copper	Connection	3	\$ 1.50
Lead		1	
Curb	Cock Valve	1	\$ 1.70
	T.S. & V.		
Service Box	Short 2 1/2 x 1 1/2		\$ 1.54
Old returned	Long 4 1/2 x 5 1/2		
	Full on Railway		
21 Ft.	1/2 in. Copper		\$ 3.99
	Galv. Iron		
	Cast Iron		
Nipples	in. at		\$
Bushings	to in. at		\$
Red'g Inc'g	Couplings to in. at		\$
Union	in. at		\$
Meter	in. at		\$
Lbs. Br. Stone	at		\$
Lbs. Sand	at		\$
Bags Cement	at		\$
Paving Brick	Mack Red Asphalt at		\$
Lead Joints	at		\$
Leadite Joints	at		\$
4 Hrs. Foreman	at 6 1/2		\$ 7.50
16 Hrs. Common Labor	at 45		\$ 7.20
Hrs. Common Labor	at		\$
Hrs. Mason	at		\$
Hrs. Masons Helper	at		\$
Hrs. Compressor	at		\$
Compensation Ins			\$ 0.35
Trucking			\$ 1-
Builders Use of Water			\$
Total			\$ 19.78

175 SOUTH  
**115 34**  
 Labor and Material Report *Sept 22* 19 *34*



6 Main Elev. of Main at tap *5 1/2*

Gate at *21'* to main Gate at  
*3/4" copper*  
 ● Curb Box

*old shut off at*  
*in case*  
 TAX ID # 309.12-10-6

*173*