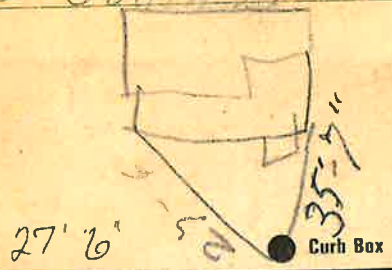


Labor and Materials

1	Copper	Connection	$\frac{3}{4}$	\$	2.60
1	Curb	Cock Valve T.S. & V.	$\frac{3}{4}$	\$	2.30
1	Service Box	Short $3\frac{1}{2} \times 1\frac{1}{2}$		\$	1.40
	Old returned	Long $4 \times 2\frac{1}{2}$ Bolt or Rd way		\$	
23	Ft.	Copper Galv Iron Pipe at	$\frac{3}{4}$	\$	6.10
	Nipples	in. at		\$	
	Bushings	to in. at		\$	
	Red'g Inc'g	Couplings to in. at		\$	
	Union	in. at		\$	
	Meter	in. at		\$	
	Lbs. Br. Stone	at		\$	
	Lbs. Sand	at		\$	
	Bags Cement	at		\$	
	Paving Brick	Mack Red Asphalt at		\$	
	Lead Joints	at		\$	
	Leadite Joints	at		\$	
5	Hrs. Foreman	at		\$	3.13
16	Hrs. Common Labor	at		\$	6.50
	Hrs. Common Labor	at		\$	
	Hrs. Mason	at		\$	
	Hrs. Mason's Helper	at		\$	
1	Hrs. Compressor	at		\$	1.50
	Compensation Ins			\$.29
	Trucking			\$	1.00
	Builders' Use of Water	Patch		\$	25.00
				Total \$	49.82

24-16 181 South 4 1929
 Labor and Material Report

131 South 21 (181)



6 Main Elev of Main at tap 4 7

Gate at 23' to main 3/4" COPPER Gate at

old Tap shut off
 in Payment
 TAX ID # 309.12-10-2