

LABOR AND MATERIALS

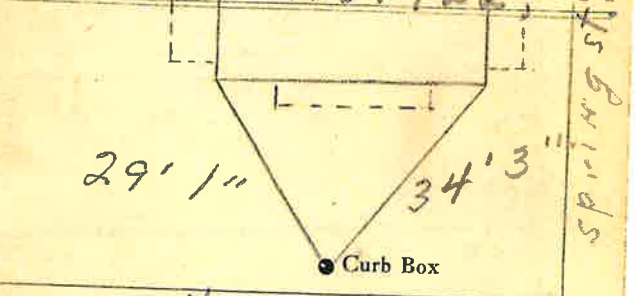
1	Copper	Connection	3/4"	\$	2.71
1	Lead	Cock	3/4" in.	\$	3.83
1	Curb	Valve			
		T. S. & V.			
1	Service box	Short 3 1/2 x 4 1/2		\$	4.69
	Old returned	Long 4 1/2 x 5 1/2			
		Buff or Rdway			
26	Ft.	Copper	Pipe at 45	\$	11.70
		G.I.			
		G.I.			
	Nipples	in. at		\$	
	Bushings	to in. at		\$	
	Red'g	Coupl'gs to in. at		\$	
	Inc'g			\$	
	Union	in. at		\$	
	Meter	in. at		\$	
	Lead Joints at			\$	
	Compound Joints at			\$	
	Maintenance Foreman			\$	46.85
15	Hrs. Water Maint. Man-1	at		\$	
	Hrs. Water Maint. Man-2	at 1.24		\$	18.60
25	Hrs. Garage Foreman	at 1.13		\$	28.25
	Hrs. Labor	at		\$	
	Hrs. Compressor at			\$	
	Compensation Ins. at \$ 4.29 per C.			\$	2.01
	Trucking			\$	14.50
	Pav't Patch			\$	
	Top by G. S. Ford			\$	
	11-22-55			\$	
	O'head			\$	
				\$	87.64

Patch? 73.29

St. Spring
 Ave. No. 8-10

Name of Owner Malan

Labor and Mat'l. Report Nov. 22, 1955



4" Main New St. Elev. of Main at tap 5 1/2'

Gate at • Gate at

26' to main

3/4" copper • Curb Box

Tap on New St.

TAX ID# 309.35.4-1