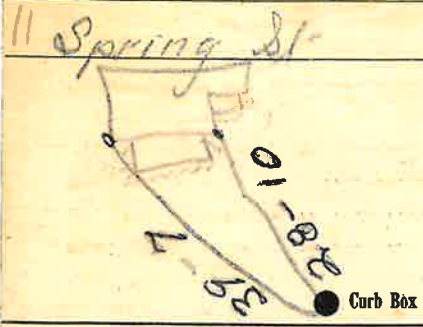


Labor and Materials

..	Copper	Connection.....	3	\$ 1.48
..	Curb	{ Cock Valve T.S.&V. } .....	1	\$ 1.79
..	Service Box	{ Short 3 1/2 x 4 1/2 } .....		\$ 1.30
..	Old returned	{ Long 4 1/2 x 5 1/2 } .....		
		{ Buff. or Rdway } .....		
..	Ft.....	in. { Copper Galv. Iron Cast Iron } Pipe at .....	3	\$ 1.44
..	Nipples	.....	1	\$
..	Bushings	..... to ..... in. at .....		\$
..	Red'g Inc'g	{ Couplings..... to ..... in. at .....		\$
..	Union.....	in. at .....		\$
..	Meter.....	in. at .....		\$
..	Lbs. Br. Stone	at .....		\$
..	Lbs. Sand	at .....		\$
..	Bags Cement	at .....		\$
..	Paving Brick	{ Mack Red Asphalt } at .....		\$
..	Lead Joints	at .....		\$
..	Leadite Joints	at .....		\$
..	3 Hrs. Foreman	at .....		\$ 1.88
..	4 Hrs. Common Labor	at Tapper .....		\$ 2.00
..	4 Hrs. Common Labor	at .....		\$ 1.80
..	Hrs. Mason	at .....		\$
..	Hrs. Masons Helper	at .....		\$
..	Hrs. Compressor	at .....		\$
..	Compensation Ins	.....		\$ 1.18
..	Trucking	.....		\$ 1.00
..	Patience Use of Water	Patch .....		\$ 5.00
Total				\$ 17.87

32-67  
 Labor and Material Report June 13 1932



Main Elev. of Main at tap  
 Gate at 8' to main Gate at

Curb Box

old Tap to be dug up

OR 2/10