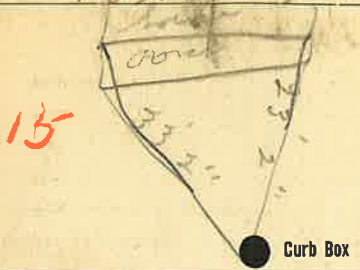


15
Labor and Material Report

no 13 Main 20'

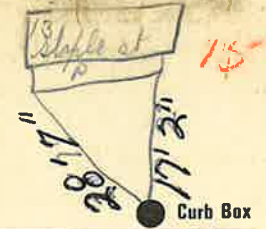


6" Main Elev. of Main at tap 11'
Gate at ● ● Gate at

● Curb Box

15
Labor and Material Report Aug 24 1928

3/4 tap at 13 Staple at



6" Main Elev. of Main at tap 41'
Gate at ● ● Gate at
24" to main

● Curb Box

H H Green
TAX ID# 309.11-5-23

Labor and Materials

1. Lead Connection	\$
..... Curb Cock	\$
..... Service Box (Short 3 1/2 x 4 1/2)	\$
..... Old returned (Long 4 1/2 x 5 1/2)	\$
26. Ft. in. G. I. Pipe at	\$
..... Nipples in. at	\$
..... Bushings to in. at	\$
..... Red'g Coup. to in. at	\$
..... Inc'g Coup. to in. at	\$
..... Union in. at	\$
..... Meter in. at	\$
..... Cu. Yds. Br. Stone at	\$
..... Cu. Yds. Sand at	\$
..... Bags Cement at	\$
..... Paving Brick { Mack Red Asphalt } at	\$
..... Hrs. Foreman at	\$
..... Hrs. Common Labor at	\$
..... Hrs. Mason at	\$
..... Hrs. at	\$
..... Hrs. at	\$
..... Builders' Use of Water	\$
..... at	\$
..... at	\$
..... at	\$
..... at	\$

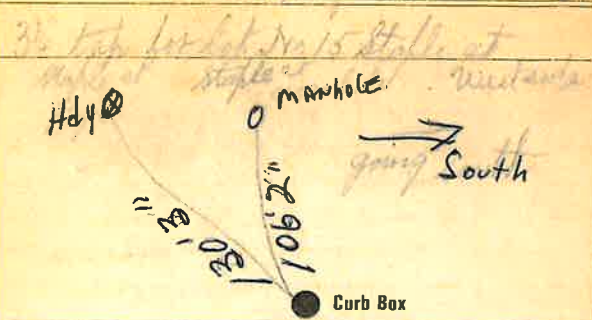
Labor and Materials

1. Copper Lead Connection ^{3/4}	\$
..... Curb { Cock Valve T-S. & V. } ^{3/4} in.	\$
1. Service Box (Short 3 1/2 x 4 1/2)	\$
..... Old returned (Long 4 1/2 x 5 1/2)	\$
24. Ft. 2 1/2 in. { Copper Galv. Iron Cast Iron } Pipe at	\$
..... Nipples in. at	\$
..... Bushings to in. at	\$
..... Red'g Inc'g } Couplings to in. at	\$
..... Union in. at	\$
..... Meter in. at	\$
..... Lbs. Br. Stone at	\$
..... Lbs. Sand at	\$
..... Bags Cement at	\$
..... Paving Brick { Mack Red Asphalt } at	\$
..... Lead Joints at	\$
..... Leadite Joints at	\$
..... Hrs. Foreman at	\$
..... Hrs. Common Labor at	\$
..... Hrs. Common Labor at	\$
..... Hrs. Mason at	\$
..... Hrs. Mason's Helper at	\$
..... Hrs. Compressor at	\$
..... Compensation Ins	\$
..... Trucking	\$
..... Builders' Use of Water	\$

Total \$.....

Labor and Materials

Copper } Connection ^{3/4"}	\$.....
Lead }	\$.....
Curb } Cock Valve { in. \$.....
	T-S & V. {
Service Box } Short 3/4x1 1/2	\$.....
Old returned } Long 1 1/2x5 1/2	\$.....
	Buff. or Rdway {
23 Ft. 3/4" in. } Copper	Pipe at \$.....
	Galv. Iron {
	Cast Iron {
Nipples..... in. at.....	\$.....
Bushings..... to..... in. at.....	\$.....
Red'g } Couplings..... to..... in. at.....	\$.....
Inc'g }	\$.....
Union..... in. at.....	\$.....
Meter..... in. at.....	\$.....
Lbs. Br. Stone at.....	\$.....
Lbs. Sand at.....	\$.....
Bags Cement at.....	\$.....
Paving Brick } Mack	at \$.....
	Red {
	Asphalt {
Lead Joints at.....	\$.....
Leadite Joints at.....	\$.....
Hrs. Foreman at.....	\$.....
Hrs. Common Labor at.....	\$.....
Hrs. Common Labor at.....	\$.....
Hrs. Mason at.....	\$.....
Hrs. Mason's Helper at.....	\$.....
Hrs. Compressor at.....	\$.....
Compensation Ins.....	\$.....
Trucking.....	\$.....
Builders' Use of Water.....	\$.....
Total \$.....	



Main Elev of Main at tap

Gate at *23' to main* Gate at

3/4" copper ● Curb Box

#15

TAX ID# 309.11-5-23