

Labor and Materials

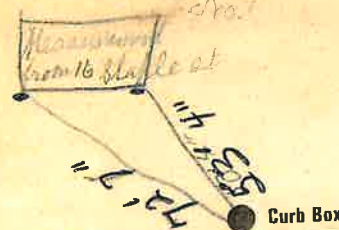
1	Copper	Connection	3/4	\$	
1	Lead				
1	Curb	Cock Valve	3/4 in.	\$	
		T.S. & V.			
1	Service Box	Short	3 1/2 x 4 1/2	\$	
	Old returned	Long	4 1/2 x 5 1/2		
		Buff. or Rdway			
7	Ft.	Copper	in.	Pipe at	\$
9		Cast Iron			
	Nipples		in. at	\$	
	Bushings		to in. at	\$	
	Red'g Inc'g	Couplings	to in. at	\$	
	Union		in. at	\$	
	Meter		in. at	\$	
	Lbs. Br. Stone		at	\$	
	Lbs. Sand		at	\$	
	Bags Cement		at	\$	
	Paving Brick	Mack	at	\$	
		Red			
		Asphalt			
	Lead Joints		at	\$	
	Leadite Joints		at	\$	
	Hrs. Foreman		at	\$	
	Hrs. Common Labor		at	\$	
	Hrs. Common Labor		at	\$	
	Hrs. Mason		at	\$	
	Hrs. Mason's Helper		at	\$	
	Hrs. Compressor		at	\$	
	Compensation Ins.			\$	
	Trucking			\$	
	Builders' Use of Water			\$	

Total \$

Labor and Material Report

18 Staple St. Aug 24 1928

3/4 tap at vacant lot East side



6' Main Elev of Main at tap 4.11

Gate at 7 or 9' to main Gate at

Lot No 25 Curb Box

H. Swiskey

TAX ID# 309.11-7-19