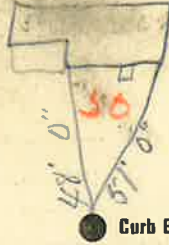


50
Labor and Material Report Aug 26 1928

3/4" tap on exact lot No 10

Measurement for lot No 10 ← Young South



● Curb Box

6" Main

Elev of Main at tap 444

Gate at ●

● Gate at

K of 6 ●

● Curb Box

Frank Thomas

50
Labor and Material Report Aug 25 1928

3/4" tap at 56 Staple at



● Curb Box

6" Main

Elev of Main at tap 444

Gate at ●

● Gate at

7' to main
3/4" copper

● Curb Box

John Lutterman

TAX ID # 309.11-13-11

Labor and Materials

1	Copper	Lead	Connection	3/4		\$
1	Curb	Cock Valve	T. S. & V.	3/4	in.	\$
1	Service Box	Old returned	Short 3/2x4 1/2			\$
			Long 4 1/2x5 1/2			\$
			Buff. or Rdway			\$
24	Ft.	3/4	Copper Galv. Iron		Pipe at	\$
			Cast Iron			\$
	Nipples				in. at	\$
	Bushings				to in. at	\$
	Red'g Inc'g		Couplings		to in. at	\$
	Union				in. at	\$
	Meter				in. at	\$
	Lbs. Br. Stone				at	\$
	Lbs. Sand				at	\$
	Bags Cement				'at	\$
	Paving Brick	Mack Red Asphalt			at	\$
	Lead Joints				at	\$
	Leadite Joints				at	\$
	Hrs. Foreman				at	\$
	Hrs. Common Labor				at	\$
	Hrs. Common Labor				at	\$
	Hrs. Mason				at	\$
	Hrs. Mason's Helper				at	\$
	Hrs. Compressor				at	\$
	Compensation Ins					\$
	Trucking					\$
	Builders' Use of Water					\$
	Total	\$				\$

Labor and Materials

1	Copper	Lead	Connection	3/4		\$
1	Curb	Cock Valve	T. S. & V.	3/4	in.	\$
1	Service Box	Old returned	Short 3/2x4 1/2			\$
			Long 4 1/2x5 1/2			\$
			Buff. or Rdway			\$
7	Ft.	3/4	Copper Galv. Iron		Pipe at	\$
			Cast Iron			\$
	Nipples				in. at	\$
	Bushings				to in. at	\$
	Red'g Inc'g		Couplings		to in. at	\$
	Union				in. at	\$
	Meter				in. at	\$
	Lbs. Br. Stone				at	\$
	Lbs. Sand				at	\$
	Bags Cement				'at	\$
	Paving Brick	Mack Red Asphalt			at	\$
	Lead Joints				at	\$
	Leadite Joints				at	\$
	Hrs. Foreman				at	\$
	Hrs. Common Labor				at	\$
	Hrs. Common Labor				at	\$
	Hrs. Mason				at	\$
	Hrs. Mason's Helper				at	\$
	Hrs. Compressor				at	\$
	Compensation Ins					\$
	Trucking					\$
	Builders' Use of Water					\$
	Total	\$				\$