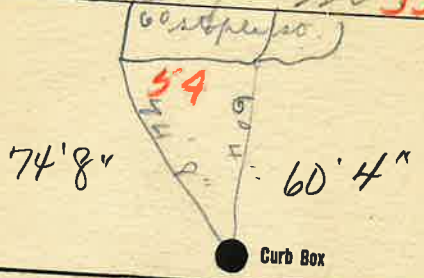


Labor and Material Report July 11 1938

no 63 Staple to 55'



6" Main Elev. of Main at tap 4'

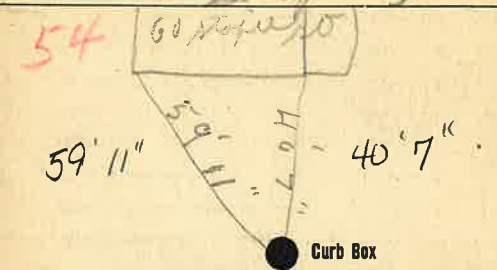
Gate at ● Gate at ●

● Curb Box

measuring from
60 staple to
54

Labor and Material Report July 11 1938

no 62 Staple street



TAX ID # 309.11-13-13
54

6" Main Elev. of Main at tap 4'

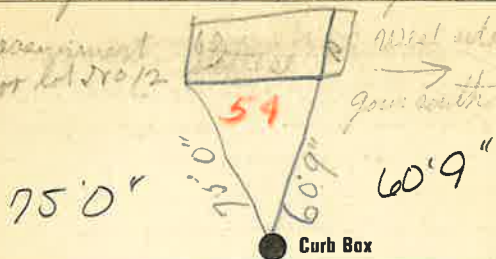
Gate at ● Gate at ●

● Curb Box

measuring from old
60 staple
54

Aug 25

3/4" tap at lot 50 12' staple at
Measurement
for lot 50 12'



6" Main

Elev of Main at tap 4ft

Gate at ●

● Gate at

● Curb Box

Frank Thomas

Aug 25

3/4" tap at 60 staple at



6" Main

Elev of Main at tap 4ft

Gate at ●

7' to main

● Gate at

3/4" copper ● Curb Box

Ray Smith

Labor and Materials

1	Copper	Lead	Connection	3/4		\$
1	Curb	Cock Valve	T.S. & V.	3/4	in.	\$
1	Service Box	Old returned	Short 3/4x4 1/2			\$
			Long 4 1/2x5 1/2			\$
			Buff. or Rdway			\$
24	Ft.	3/4	in.	Copper Galv. Iron	Pipe at	\$
	Nipples		in. at			\$
	Bushings		to in. at			\$
	Red'g	Inc'g	Couplings		to in. at	\$
	Union		in. at			\$
	Meter		in. at			\$
	Lbs. Br. Stone		at			\$
	Lbs. Sand		at			\$
	Bags Cement		at			\$
	Paving Brick	Mack Red Asphalt	at			\$
	Lead Joints		at			\$
	Leadite Joints		at			\$
	Hrs. Foreman		at			\$
	Hrs. Common Labor		at			\$
	Hrs. Common Labor		at			\$
	Hrs. Mason		at			\$
	Hrs. Mason's Helper		at			\$
	Hrs. Compressor		at			\$
	Compensation Ins					\$
	Trucking					\$
	Builders' Use of Water					\$
	Total \$					\$

Labor and Materials

1	Copper	Lead	Connection	3/4		\$
1	Curb	Cock Valve	T.S. & V.	3/4	in.	\$
1	Service Box	Old returned	Short 3/4x4 1/2			\$
			Long 4 1/2x5 1/2			\$
			Buff. or Rdway			\$
7	Ft.	3/4	in.	Copper Galv. Iron	Pipe at	\$
	Nipples		in. at			\$
	Bushings		to in. at			\$
	Red'g	Inc'g	Couplings		to in. at	\$
	Union		in. at			\$
	Meter		in. at			\$
	Lbs. Br. Stone		at			\$
	Lbs. Sand		at			\$
	Bags Cement		at			\$
	Paving Brick	Mack Red Asphalt	at			\$
	Lead Joints		at			\$
	Leadite Joints		at			\$
	Hrs. Foreman		at			\$
	Hrs. Common Labor		at			\$
	Hrs. Common Labor		at			\$
	Hrs. Mason		at			\$
	Hrs. Mason's Helper		at			\$
	Hrs. Compressor		at			\$
	Compensation Ins					\$
	Trucking					\$
	Builders' Use of Water					\$
	Total \$					\$

Labor and Materials

Lead Connection	\$		
Curb Cock	\$		
Service Box (Short 3½ x 4½)	\$		
Old returned (Long 4½ x 5½ Buffalo)			
1½ Ft. 3/4 in. G.I. Pipe at	\$		
Nipples	in. at	\$	
Bushings	to	in. at	\$
Red'g Coup	to	in. at	\$
Ine'g Coup	to	in. at	\$
Union	in. at	\$	
Meter	in. at	\$	
Cu. Yds. Br. Stone at	\$		
Cu. Yds. Sand at	\$		
Bags Cement at	\$		
Paving Brick (Mack Red Asphalt) } at	\$		
Hrs. Foreman at	\$		
Hrs. Common Labor at	\$		
Hrs. Mason at	\$		
Hrs. at	\$		
Hrs. at	\$		
Builders' Use of Water	\$		
..... at	\$		
..... at	\$		
..... at	\$		
..... at	\$		
Total \$			

Labor and Material Report

July 11 1922

No. 61 Hope St.



Curb Box

6" Main Elev. of Main at tap 11"
 Gate at ● Gate at ●

Curb Box