

67

Labor and Material Report *Aug 25* 19 *28*

3/4" tap at 75 Staple st

67

● Curb Box

6" Main Elev of Main at tap *4.11*

Gate at ● ● Gate at

● Curb Box

Steven Barrows

3/4" copper

24' to MAIN

Second lot of 1st lot on E side

Labor and Material Report 19

3/4" tap at lot 11 Staple St East side

67

3/4"

See below

● Curb Box

measured from #67

6" Main Elev of Main at tap

Gate at ● TAX ID # 309.11-14-6 ● Gate at

7 to MAIN

113

● Curb Box *3/4" copper*

Stephen Barrows

45' 2"

45' 6"

Staple St.

Parsonage

64

Labor and Materials

1	Copper } Connection	3/4	\$
	Lead } Connection		
1	Curb } Cock Valve } T.S. & V. }	3/4 in.	\$
1	Service Box } Short 3 1/2 x 4 1/2 }		\$
	Old returned } Long 4 1/2 x 5 1/2 }		
		Buff. or Rdway }	
24	Ft. } in. } Copper Galv. Iron } Pipe at		\$
		Cast Iron }	
	Nipples	in. at	\$
	Bushings	to in. at	\$
	Red'g } Inc'g }	Couplings to in. at	\$
	Union	in. at	\$
	Meter	in. at	\$
	Lbs. Br. Stone	at	\$
	Lbs. Sand	at	\$
	Bags Cement	at	\$
	Paving Brick } Mack Red Asphalt }	at	\$
	Lead Joints	at	\$
	Leadite Joints	at	\$
	Hrs. Foreman	at	\$
	Hrs. Common Labor	at	\$
	Hrs. Common Labor	at	\$
	Hrs. Mason	at	\$
	Hrs. Mason's Helper	at	\$
	Hrs. Compressor	at	\$
	Compensation Ins.		\$
	Trucking		\$
	Builders' Use of Water		\$
	Total	\$	

Labor and Materials

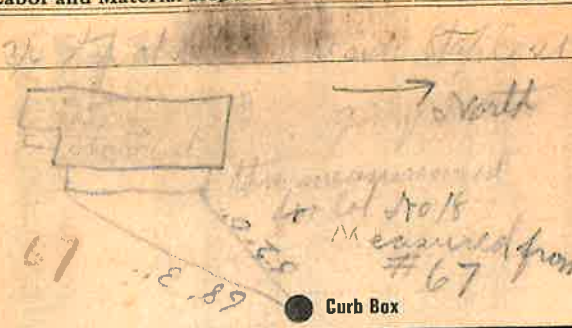
1	Copper } Connection	3/4	\$
	Lead } Connection		
1	Curb } Cock Valve } T.S. & V. }	3/4 in.	\$
7	Service Box } Short 3 1/2 x 4 1/2 }		\$
	Old returned } Long 4 1/2 x 5 1/2 }		
		Buff. or Rdway }	
7	Ft. } in. } Copper Galv. Iron } Pipe at		\$
		Cast Iron }	
	Nipples	in. at	\$
	Bushings	to in. at	\$
	Red'g } Inc'g }	Couplings to in. at	\$
	Union	in. at	\$
	Meter	in. at	\$
	Lbs. Br. Stone	at	\$
	Lbs. Sand	at	\$
	Bags Cement	at	\$
	Paving Brick } Mack Red Asphalt }	at	\$
	Lead Joints	at	\$
	Leadite Joints	at	\$
	Hrs. Foreman	at	\$
	Hrs. Common Labor	at	\$
	Hrs. Common Labor	at	\$
	Hrs. Mason	at	\$
	Hrs. Mason's Helper	at	\$
	Hrs. Compressor	at	\$
	Compensation Ins.		\$
	Trucking		\$
	Builders' Use of Water		\$
	Total	\$	

Labor and Materials

1	Copper	} Connection		\$
	Lead			
1	Curb	} Cock Valve T. S. & V.	in.	\$
1	Service Box	} Short 3 1/2 x 1 1/2 Long 4 1/2 x 5 1/2 Buff. or Rdway		\$
	Old returned			
24	Ft.	} Copper Galv. Iron Cast Iron	Pipe at	\$
	in.			
	Nipples		in. at	\$
	Bushings		to in. at	\$
	Red'g	} Couplings	to in. at	\$
	Inc'g			
	Union		in. at	\$
	Meter		in. at	\$
	Lbs. Br. Stone		at	\$
	Lbs. Sand		at	\$
	Bags Cement		at	\$
	Paving Brick	} Mack Red Asphalt	at	\$
	Lead Joints		at	\$
	Leadite Joints		at	\$
	Hrs. Foreman		at	\$
	Hrs. Common Labor		at	\$
	Hrs. Common Labor		at	\$
	Hrs. Mason		at	\$
	Hrs. Mason's Helper		at	\$
	Hrs. Compressor		at	\$
	Compensation Ins			\$
	Trucking			\$
	Builders' Use of Water			\$
	Total		\$	

Labor and Material Report

Empty Lot
1928



6' Main Elev of Main at tap 4.11
Gate at ● Gate at ●

● Curb Box

Shepton Burrows
3/4" Copper
24' to MAIN