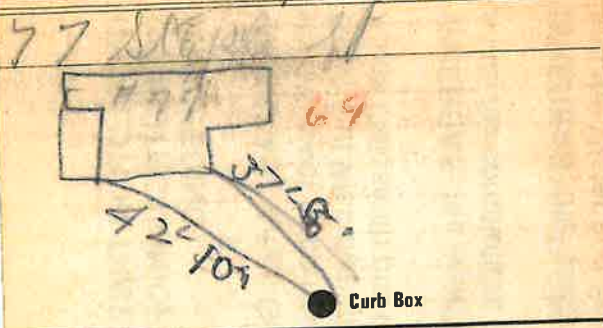


### Labor and Materials

1	Copper } Connection.....	\$ 3.20
	Lead } .....	
1	Curb } Cock Valve } 3/4 in.....	\$ 1.00
	Service Box } Short 3 1/2 x 4 1/2 } .....	\$ 1.20
	Old returned } Long 4 1/2 x 5 1/2 } Buff. or Rdway } .....	
24	Ft. 3/4 in. } Copper Galv. Iron } Pipe at.....	\$ 5.28
	Nipples..... in. at.....	\$
	Bushings..... to..... in. at.....	\$
	Red'g } Couplings..... to..... in. at.....	\$
	Inc'g } .....	\$
	Union..... in. at.....	\$
	Meter..... in. at.....	\$
	Lbs. Br. Stone at.....	\$
	Lbs. Sand at.....	\$
	Bags Cement at.....	\$
	Paving Brick } Mack Red Asphalt } at.....	\$
	Lead Joints at.....	\$
	Leadite Joints at.....	\$
3	Hrs. Foreman at.....	\$ 1.88
1.4	Hrs. Common Labor at.....	\$ 5.29
	Hrs. Common Labor at.....	\$
	Hrs. Mason at.....	\$
	Hrs. Mason's Helper at.....	\$
	Hrs. Compressor at.....	\$
	Compensation Ins.....	\$ 2.00
	Trucking.....	\$ 1.00
	Builders' Use of Water.....	\$
Total \$		19.65

### Labor and Material Report

28-47 69 July 28 1928



Main Elev. of Main at tap 5  
Gate at ● Gate at ●

3/4" Copper ● Curb Box  
24' to MAIN  
Old 3' of Red Pipe  
In 29 mile way  
TAX ID # 309.11-14-5