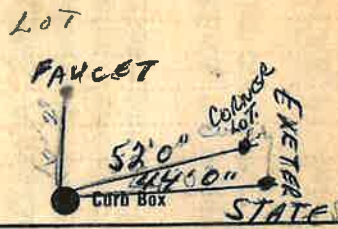


Labor and Materials

✓	Copper	Connection	\$ 370
✓	Curb	Cock Valve T.S. & V. } in.	\$ 1.00
✓	Service Box	Short 3" x 4" } Long 4" x 5" }	\$ 1.30
8	Old returned	Buff. or Redway.	
	8 Ft. 3/4 in.	Copper Galv. Iron Cast Iron } Pipe at	\$ 176
	Nipples	in. at	\$
	Bushings	to in. at	\$
	Red'g Inc'g	Couplings to in. at	\$
	Union	in. at	\$
	Meter	in. at	\$
	Lbs. Br. Stone	at	\$
	Lbs. Sand	at	\$
	Bags Cement	at	\$
	Paving Brick	Mack Red Asphalt } at	\$
	Lead Joints	at	\$
	Leadite Joints	at	\$
✓	Hrs. Foreman	at	\$ 63
✓	Hrs. Common Labor	at	\$ 41
	Hrs. Common Labor	at	\$
	Hrs. Mason	at	\$
	Hrs. Mason's Helper	at	\$
	Hrs. Compressor	at	\$
	Compensation Ins.		\$
✓	Trucking		\$ 1.50
✓	Builders' Use of Water		\$
	Total	\$	

COR. STATE & FAXON



Main Elev. of Main at tap 5'
 Gate at 3/4" COPPER Gate at 8' to MAIN

● Curb Box

Kelmer Lot