

1-88 4150

Labor and Materials

1	Copper } Connection... 3/4		\$ 3.20
	Lead		
1	Curb } Cock Valve T.S. & V. } 3/4 in.		\$ 10.00
1	Service Box } Short 3 1/2 x 4 1/2 } Old returned } Long 4 1/2 x 5 } } Buff. or Rdway }		\$ 1.30
8	Ft. 3/4 in. } Copper Galv. Iron Cast Iron } Pipe at 12		\$ 1.76
	Nipples..... in. at.....		\$
	Bushings..... to..... in. at.....		\$
1	Red'g } Couplings... 3/4 to..... in. at.....		\$ 1.50
	Union..... in. at.....		\$
	Meter..... in. at.....		\$
	Lbs. Br. Stone at.....		\$
	Lbs. Sand at.....		\$
	Bags Cement at.....		\$
	Paving Brick } Mack Red Asphalt } at.....		\$
	Lead Joints at.....		\$
	Leadite Joints at.....		\$
2	Hrs. Foreman at... 6.25		\$ 1.25
8	Hrs. Common Labor at... 5.0		\$ 4.00
	Hrs. Common Labor at.....		\$
	Hrs. Mason at.....		\$
	Hrs. Mason's Helper at.....		\$
	Hrs. Compressor at.....		\$
	Compensation Ins.....		\$ 1.50
	Trucking.....		\$ 1.00
	Builders' Use of Water.....		\$

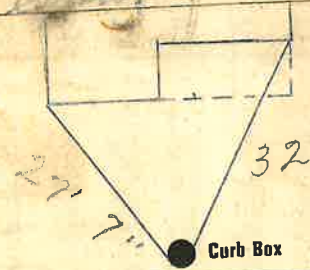
Total \$13.81.

26-52

Labor and Material Report

June 10 1916

no 29 [unclear] Ave.



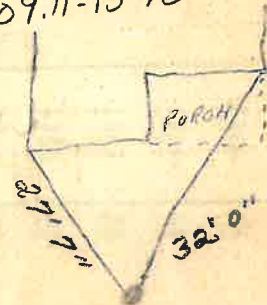
6" Main

Elev. of Main at tap 14 1/2'

Gate at ● Gate at ●
3/4" Copper 8' to main

● Curb Box

~~no measurement~~
TAX ID# 309.11-15-12



Measured
I.N.

3/12/16