

LABOR AND MATERIALS

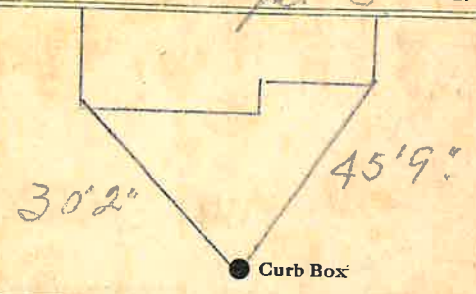
1	Copper Lead	Connection	3/4	\$	2.94
1	Curb	Clock Valve T.S. & V.	3/4 in.	\$	3.71
1	Service box Old returned	} Short 3 1/2 X 4 1/2 } Long 4 1/2 X 5 1/2 } Buff or Rdway		\$	5.90
8	Ft.		3/4 in.	Copper Galv. Iron Cast Iron	Pipe at
	Nipples	in. at		\$	
	Bushings	to in. at		\$	
	Red'g Inc'g	Couplings	to in. at	\$	
	Union	in. at		\$	
	Meter	in. at		\$	
	Lead Joints	at		\$	
	Compound Joints	at		\$	
	Hrs. Foreman	at		\$	
4	Hrs. Strauffer	at	W.M.M.-2	91	\$ 3.64
	Hrs. Tapper	at		\$	
5	Hrs. Labor	at		80	\$ 4.00
	Hrs. Labor	at		\$	
	Hrs. Compressor	at		\$	
	Compensation Ins.			\$	17
	Trucking			\$	1.00
	Builders Use of Water			\$	6.70
	1 1/2 x 4 1/2 1/2 x 5 1/2			\$	
				\$	
				\$	
				\$	
				\$	
				\$	
				\$	
				\$	
				\$	
				\$	
				\$	
				\$	29.96

10

Stewart St. Pt. Ave. No. 7

Name of Owner Bentley

Labor and Mat'l. Report April 3 1948



6 Main Elev. of Main at tap 4 1/2
Gate at ● Gate at ●

3/4" Copper 8' to main

● Curb Box

TAX ID# 309.12-15-15