

### LABOR AND MATERIALS

1	Copper Lead	Connection	3/4		\$	2.29
1	Curb	Cock Valve T.S. & V.	3/4 in.		\$	2.70
1	Service box Old returned	Short 3 1/2 x 4 1/2 Long 4 1/2 x 5 1/2 Buff or Rdway			\$	4.25
11	Ft.	3/4 in.	Copper G.I. C.I. Pipe at	35	\$	3.85
	Nipples	in. at			\$	
	Bushings	to in. at			\$	
	Red'g Inc'g	Coupl'gs to in. at			\$	
	Union	in. at			\$	
	Meter	in. at			\$	
	Lead Joints	at			\$	
	Compound Joints	at			\$	
1	Hrs. Water Maint. Man-1	at	1.12		\$	1.12 <sup>5</sup>
7	Hrs. Water Maint. Man-2	at	1.02		\$	7.14 <sup>0</sup>
	Hrs. Labor	at			\$	
13	Hrs. Labor	at	91		\$	11.83
1	Hrs. Compressor	at	1.20		\$	1.20
	Compensation Ins. at \$	per C.			\$	45
	Trucking				\$	1.00
	Pav't Patch				\$	6.75
	Rep by Warkowski				\$	
	O'head				\$	
					\$	42.58

Stoddard

Str.  
#  
Ave. No.

15-

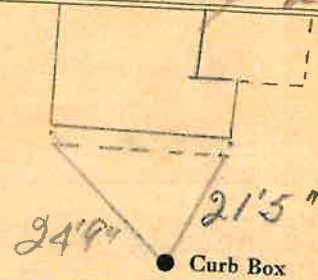
Name of Owner

Dean Ellsworth

Labor and Mat'l. Report

Nov 2

19 50



6 Main

Elev. of Main at tap 5-

Gate at ●

● Gate at

3/4" copper 11' to main

● Curb Box

TAX ID # 302.12-19-9