

Labor and Materials

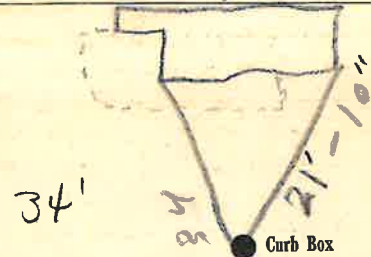
4	Copper	Connection.....	3'	\$ 96
4	Lead	3'	\$ 133
4	Curb	{ Cock Valve T.S. cov. }		\$ 135
6	Service Box	{ Short 3 1/2 x 4 1/2 Long 4 1/2 x 5 1/2 Buff. or Edway }		\$ 135
23	Ft. returned	{ Copper Galv. Iron Cast Iron } Pipe at 15'		\$ 345
	Nipples in. at		\$
	Bushings to in. at		\$
	Red'g Inc'g	{ Couplings..... to in. at		\$
	Union in. at		\$
	Meter in. at		\$
	Lbs. Br. Stone	at		\$
	Lbs. Sand	at		\$
	Bags Cement	at		\$
	Paving Brick	{ Mack Red Asphalt } at		\$
	Lead Joints	at		\$
	Leadite Joints	at		\$
	Hrs. Foreman	at		\$
	Hrs. Common Labor	at		\$
	Hrs. Common Labor	at		\$
	Hrs. Mason	at		\$
	Hrs. Masons Helper	at		\$
	Hrs. Compressor	at		\$
	Compensation Ins		\$
	Trucking		\$
	Builders Use of Water	Patch		\$ 5-

Total \$.....

Labor and Material Report

July 30 1936

26 Third St



6 Main

Elev. of Main at tap 5

Gate at 3/4" Copper 23' to Gate at MAIN

old shut off at main

TAX ID # 309.12-13-15