

LABOR AND MATERIALS

1	Copper Lead	Connection $\frac{3}{4}$	\$	2.87
1	Curb	Cock Valve T.S. & V. $\frac{3}{4}$ in.	\$	3.62
1	Service box Old returned	Short $3\frac{1}{2} \times 4\frac{1}{2}$ Long $4\frac{1}{2} \times 5\frac{1}{2}$ Buff or Rdway	\$	4.68
12	Ft. $\frac{3}{4}$ in.	Copper Pipe at 32	\$	3.84
	Nipples	in. at	\$	
	Bushings	to in. at	\$	
	Red'g Inc'g	Coupl'gs to in. at	\$	
	Union	in. at	\$	
	Meter	in. at	\$	
	Lead Joints	at	\$	
	Compound Joints	at	\$	
	Hrs. Water Maint. Man-1	at	\$	
3	Hrs. Water Maint. Man-2	at 102	\$	3.06
3	Hrs. Labor-	at 91	\$	2.73
	Hrs. Labor-	at	\$	
	Hrs. Compressor	at	\$	
	Compensation Ins.	at \$2.18 per C	\$	13
	Trucking		\$	2.50
	Pav't Patch		\$	10.25
	Tap by Mfg. Union		\$	
	O'head		\$	
			\$	33.18

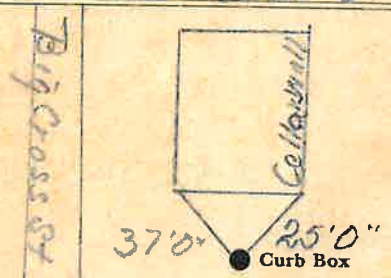
110

THIRD

St. 37  
-Pt.  
Ave. No.

Name of Owner  
Bailey

Labor and Mat'l. Report Oct 5 1949



Third St

6 Main Elev. of Main at tap 5

Gate at ● Gate at ●  
 $\frac{3}{4}$ " Copper 12' to MAIN

● Curb Box

TAX ID# 309.12-10-26

LSM-5C 5 15-48

Tap on Third St