

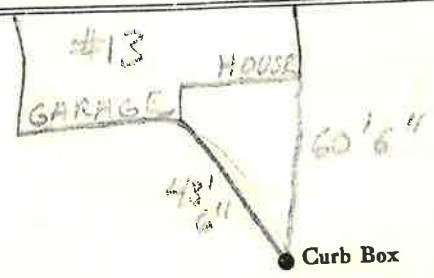
LABOR AND MATERIALS

Copper	} Connection		\$	
Lead				
Curb	} Cock Valve } T. S. & V. }	in.	\$	
Service box		} Short 3½ x 4½ Long 4½ x 5½ Buff or Rdway }		\$
Old returned				
26 Ft. ¾ in.	} Copper C.I. C.I. }		Pipe at	\$
Nipples		in. at	\$	
Bushings	to	in. at	\$	
Red'g } Inc'g }	} Coupl'gs	to	in. at	\$
Union		in. at	\$	
Meter	in. at	\$		
Lead Joints	at	\$		
Compound Joints	at	\$		
Maintenance Foreman		\$		
Hrs. Water Maint. Man—1	at	\$		
Hrs. Water Maint. Man—2	at	\$		
Hrs. Garage Foreman	at	\$		
Hrs. Labor—	at	\$		
Hrs. Compressor	at	\$		
Compensation Ins. at \$	per C	\$		
Trucking		\$		
Pav't Patch		\$		
		\$		
		\$		
		\$		
O'head		\$		
		\$		

DR.
St.
Pl.
Ave. No. 13
Rhomburg

Name of Owner
Christopher Corlew

Labor and Mat'l. Report Nov 19 87



Main Elev. of Main at tap
Gate at • Gate at

¾" COPPER 26' to MAIN

• Curb Box

TAX ID # 309.15-7-5