

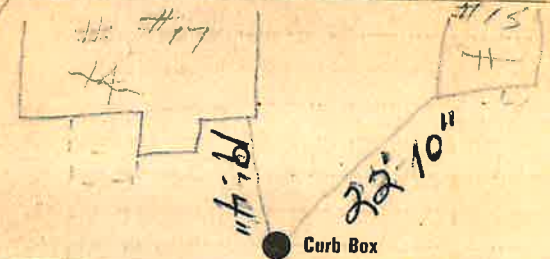
Labor and Materials

✓ Copper } Connection $\frac{3}{4}$	\$ 3.20
Lead }.....	
✓ Curb } Cock }.....	\$ 1.00
Valve }.....	
T. S. & V. }.....	
✓ Service Box } Short $3\frac{1}{2} \times 4\frac{1}{2}$ }.....	\$ 1.00
Old returned } Long $4\frac{1}{2} \times 5\frac{1}{2}$ }.....	
Buff. or Rdway }.....	
✓ 2 Ft. } in. } Copper } Pipe at.....	\$ 2.64
Galv. Iron }.....	
Cast Iron }.....	
Nipples..... in. at.....	\$
Bushings..... to..... in. at.....	\$
Red'g } Couplings..... to..... in. at.....	\$
Inc'g }.....	
Union..... in. at.....	\$
Meter..... in. at.....	\$
Lbs. Br. Stone at.....	\$
Lbs. Sand at.....	\$
Bags Cement at.....	\$
✓ Paving Brick } Mack } at.....	\$
Red }.....	
Asphalt }.....	
Lead Joints at.....	\$
Leadite Joints at.....	\$
✓ 7 Hrs. Foreman at..... 62.5	\$ 4.37
Hrs. Common Labor at.....	\$
✓ 17 Hrs. Common Labor at..... 40.87	\$ 6.89
Hrs. Mason at.....	\$
Hrs. Mason's Helper at.....	\$
Hrs. Compressor at.....	\$
Compensation Ins..... 30	\$
Trucking..... 1.00	\$ 1.00
Builders' Use of Water.....	\$
Total \$ 20.80	

Labor and Material Report

19 26

Top 15 74 + 24 1/2 71 over st



Main

Elev. of
Main at tap

Gate at

3/4" Copper

12' to main Gate at

● Curb Box

2

Houses 017

this Tap

17 of 17 Rear.

TAX ID # 303.17-1-29