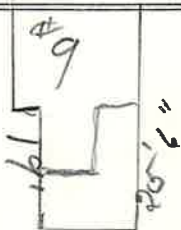


St. TRAVER
-Pl. 9
Ave. No. 9

Name of Owner

TAX ID# 303.17-1-33

Labor and Mat'l. Report 19



● Curb Box

4" GAL Main

Elev. of Main at tap 5

Gate at ●

● Gate at

● Curb Box

1935-95

Labor and Material Report Aug 21

1930

3/4 tap at Traver at #9



6" C.I. 1965

4" gal Main

Elev. of Main at tap 5 ft

Gate at ●

● Gate at

10' to MAIN

● Curb Box

Old tap shut off at main

LABOR AND MATERIALS

Copper	} Connection _____	\$ _____	
Lead			
Curb	} Cock } Valve } _____ in. _____	\$ _____	
			} T. S. & V. }
Service box			
Old returned			
Ft. _____ in.	} Copper } G. I. } Pipe at _____	\$ _____	
			} C. I. }
Nipples _____ in.	at _____	\$ _____	
Bushings _____ to _____ in.	at _____	\$ _____	
Red'g } Inc'g }	} Coupl'gs _____ to _____ in. at _____	\$ _____	
Union _____ in.			at _____
Meter _____ in.	at _____	\$ _____	
Lead Joints at _____		\$ _____	
Compound Joints at _____		\$ _____	
Maintenance Foreman _____		\$ _____	
Hrs. Water Maint. Man—1 at _____		\$ _____	
Hrs. Water Maint. Man—2 at _____		\$ _____	
Hrs. Garage Foreman _____ at _____		\$ _____	
Hrs. Labor— _____ at _____		\$ _____	
Hrs. Compressor at _____		\$ _____	
Compensation Ins. at \$ _____ per C _____		\$ _____	
Trucking _____		\$ _____	
Pav't Patch _____		\$ _____	
_____		\$ _____	
_____		\$ _____	
_____		\$ _____	
O'head _____		\$ _____	
_____		\$ _____	

Labor and Materials

1. Copper	} Connection. 3/4	\$ 1.75	
Lead			
1. Curb	} Cock } Valve } 3/4 in	\$ 1.70	
			} T.S.&V. }
1. Service Box			
Old returned			
10 Ft. 3/4 in.	} Copper } Galv. Iron } Pipe at 13/2	\$ 1.35	
			} Cast Iron }
Nipples _____ in.	at _____	\$ _____	
Bushings _____ to _____ in.	at _____	\$ _____	
Red'g } Inc'g }	} Couplings _____ to _____ in. at _____	\$ _____	
Union _____ in.			at _____
Meter _____ in.	at _____	\$ _____	
Lbs. Br. Stone at _____		\$ _____	
Lbs. Sand at _____		\$ _____	
Bags Cement at _____		\$ _____	
Paving Brick { Mack } Red } Asphalt } at _____		\$ _____	
Lead Joints at _____		\$ _____	
Leadite Joints at _____		\$ _____	
4 Hrs. Foreman at _____ 6.75		\$ 2.50	
7 Hrs. Common Labor at _____ 45		\$ 3.15	
Hrs. Common Labor at _____		\$ _____	
Hrs. Mason at _____		\$ _____	
Hrs. Masons Helper at _____		\$ _____	
Hrs. Compressor at _____		\$ _____	
Compensation Ins _____		\$ 21	
Trucking _____		\$ 1-	
Bullders Use of Water Patch _____		\$ 5-	

Total \$ 17.61