

LABOR AND MATERIALS

1	Copper Lead	Connection	3/4"	\$	2.76
1	Curb	Cock Valve	3/4 in.	\$	3.49
1	Service box	Short 3/2 X 4 1/2			
	Old returned	Long 4 1/2 X 5 1/2		\$	4.74
26	Ft.	Buff or Rdway		\$	9.10
	26	Copper Pipe at	3/4 in.	\$	9.10
		G.I.			
		C.I.			
	Nipples	in. at		\$	
	Bushings	to in. at		\$	
1	Inc'g	Coupl'gs	3/4 in. at	\$	53
	Union	in. at		\$	
	Meter	in. at		\$	
	Lead Joints at			\$	
	Compound Joints at			\$	
	Hrs. Water Maint. Man-1	at		\$	
12.4	Hrs. Water Maint. Man-2	at	1.24	\$	15.50
	Hrs. Labor	at		\$	
40	Hrs. Labor	at	1.13	\$	45.20
	Hrs. Compressor at			\$	
	Compensation Ins. at	3.106 per C		\$	2.25
	Trucking			\$	1.00
	Pav't Patch			\$	
	Trophy Gifford	Oct 3-52		\$	
	O'head			\$	
				\$	85.57

St.
Pl.
Ave. No. 14

East Tremenot

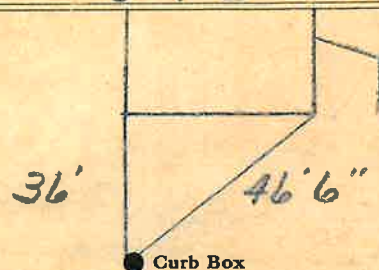
Name of Owner

Alv Williams

Labor and Mat'l. Report

Oct 3

1952



6"

Main

Elev. of
Main at top

5'

Gate at ●

● Gate at

3/4" Copper 26' to main

● Curb Box

TAX ID# 309.16-14-19