

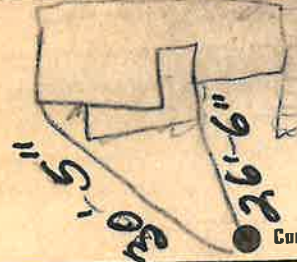
Labor and Materials

1	Copper } Connection	3	\$ 2.60
1	Lead } Connection	3	\$ 2.27
1	Curb } Cock	3/4	\$ 2.27
1	Service Box } Short 3/4x1/2	4	\$ 1.38
1	Old returned } Sun. of Rdway		
2.8	Ft. } Copper	3/4	\$ 5.04
	Cast Iron Pipe at		
	Nipples in. at		\$
1	Bushings 3/4 to 1 in. at		\$.10
	Red'g } Couplings 2 to in. at		\$
	Inc'g } Couplings 2 to in. at		\$
	Union in. at		\$
	Meter in. at		\$
	Lbs. Br. Stone at		\$
	Lbs. Sand at		\$
	Bags Cement at		\$
	Paving Brick } Mack		\$
	Red } at		\$
	Asphalt }		\$
	Lead Joints at		\$
	Leadite-Joints at		\$
3	Hrs. Foreman at		\$ 1.98
11	Hrs. Common Labor at		\$ 4.95
	Hrs. Common Labor at		\$
	Hrs. Mason at		\$
	Hrs. Mason's Helper at		\$
	Hrs. Compressor at		\$
	Compensation Ins		\$.71
	Trucking		\$ 1.00
	Builders' Use of Water Patch		\$ 5.00
Total \$			24.43

Labor and Material Report

1931

429 *Wanderburg St*



22
Hoyt
Ave
11/11

Curb Box

6 Main

Elev of Main at tap

Gate at

Gate at

28' to MAIN
3/4 COPPER

Curb Box

Old Tap Discon

This is 22 Hoyt Ave

TAX ID # 302.16-14-15