

LABOR AND MATERIALS

Copper	Connection	3/4			
Lead					\$ 2.94
Curb	Cock	3/4	in.		\$ 3.71
	Valve				
	T. S. & V.				
Service box	Short 3/2 X 4 1/2				
Old returned	Long 4 1/2 X 5 1/2				
26' 10/17/62 K4	Buff or Rdway			\$ 5.90	
24' 3/4	Copper				
	G. I.		Pipe at 30	\$ 7.20	
	C. I.				
Nipples	in. at				\$
Bushings	to in. at				\$
Red'g					
Inc'g	Coupl'gs to in. at				\$
Union	in. at				\$
Meter	in. at				\$
Lead Joints at					\$
Compound Joints at					\$
Hrs. Water Maint. Man-1 at					\$
9	Hrs. Water Maint. Man-2 at	102		\$ 8.16	
13	Hrs. Labor - at	91		\$ 11.83	1999
Hrs. Labor - at				\$	
Hrs. Compressor at				\$	
Compensation Ins. at \$	per C			\$ 44	
Trucking				\$ 1.00	
Pav't Patch	Before Paving			\$	
Trip up. Rep. Bill				\$	
O'head				\$	
				\$ 41.18	

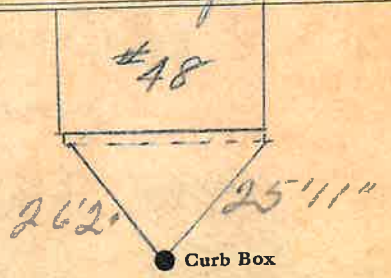
136

St.
Pl.
Ave. No. 78

Walnut

Name of Owner
Roccasessa

Labor and Mat'l. Report Sept 22 1948



4 Main Elev. of Main at tap 5

Gate at ● ● Gate at

3/4" Copper 26' to main

● Curb Box

TAX ID# 303.17-2-7