

Labor and Materials

1	Copper } Connection	3/4	\$3.20
1	Curb } Cock Valve } P.S. & V. }	3/4 in.	\$1.00
1	Service Box } Short 3 1/2 x 4 1/2 }		
25	Old returned } Long 4 1/2 x 5 1/2 }		\$1.30
		Buf. or Rdway	
1	Ft. } Copper } Galv. Iron } Cast Iron }	3/4 in. Pipe at	\$4.40
	Nipples	in. at	\$
1	Bushings	3/4 to 1/2 in. at	\$1.07
	Red'g } Inc'g } Couplings	to in. at	\$
	Union	in. at	\$
	Meter	in. at	\$
	Lbs. Br. Stone	at	\$
	Lbs. Sand	at	\$
	Bags Cement	at	\$
	Paving Brick } Mack } Red } Asphalt }	at	\$
	Lead Joints	at	\$
	Leadite Joints	at	\$
4	Hrs. Foreman	at 62.5	\$2.50
34	Hrs. Common Labor	at 50	\$13.81
	Hrs. Common Labor	at	\$
	Hrs. Mason	at	\$
	Hrs. Mason's Helper	at	\$
	Hrs. Compressor	at	\$
	Compensation Ins.		\$4.3
1	Trucking		\$1.00
	Builders' Use of Water		\$
S' Frost			Total \$29.41

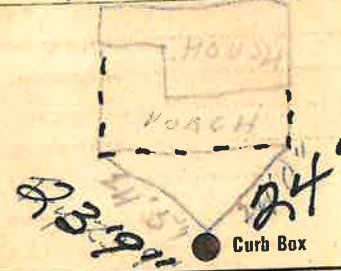
27-1

Labor and Material Report

Mar 2 1927

1927

56 Walnut St



1/4 Main

Elev. of Main at tap 5

Gate at

3/4" Copper 25'9" to MAIN

Gate at

Curb Box

TAX ID # 303.17-2-11