

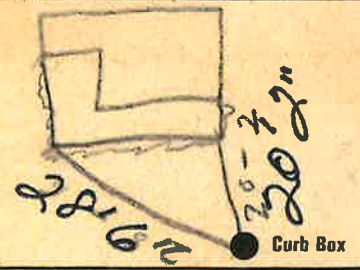
Labor and Materials

Copper	Connection	3	\$ 2.60
Lead		4	
Curb	Cock Valve	3	\$ 2.27
	S. & V.	4	
Service Box	Short	3/4 x 1/2	\$ 1.38
Old returned	Buff on Railway		
27'9"	Ft.	in.	\$ 3.96
	Nipples	in. at	\$
	Bushings	to in. at	\$
	Red'g Inc'g	Couplings to in. at	\$
	Union	in. at	\$
	Meter	in. at	\$
	Lbs. Br. Stone	at	\$
	Lbs. Sand	at	\$
	Bags Cement	at	\$
	Paving Brick	Mack Red Asphalt at	\$
	Lead Joints	at	\$
	Leadite Joints	at	\$
4	Hrs. Foreman	at	\$ 2.50
18	Hrs. Common Labor	at	\$ 8.10
	Hrs. Common Labor	at	\$
	Hrs. Mason	at	\$
	Hrs. Mason's Helper	at	\$
	Hrs. Compressor	at	\$
	Compensation Ins		\$.33
	Trucking		\$ 1-
	Builders' Use of Water	Patch	\$ 5-
Total \$			27.14

31-98

Labor and Material Report July 19 1931

58 Walnut St



4 Main Eley of Main at tap 5 1/2

Gate at 3/4 Copper 27'9" to MAIN Gate at

Curb Box

old Tap shut off

TAX ID # 303.13-17-1