

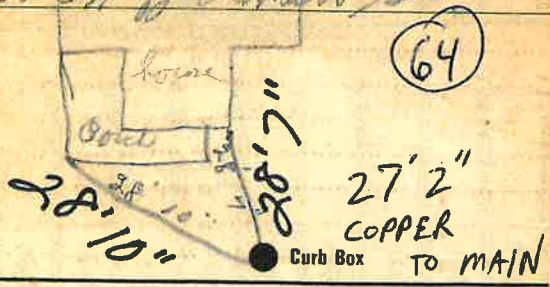
Labor and Materials

1/1	Copper } Connection ^{3/4}	\$ 5.20
1/1	Curb } Cock Valve } ^{3/4} in.	\$ 1.00
		F. S. & V.
1/1	Service Box } Short 3 1/2 x 4 1/2	\$ 1.30
	Old returned } Long 4 1/2 x 5 1/2	
		Buff. or Rdway
2/2	30' 5" 2 1/2" Copper	\$ 50.6
	Pt. 3/4 in. Galv. Iron } Pipe at	
		Cast Iron
K# 11-19-034	Nipples..... in. at.	\$
1/1	Bushings ^{3/4} to ^{5/8} in. at.	\$ 1.50
1/1	Red'g } Couplings..... to..... in. at.	\$ 1.00
	Inc'g }	
	Union..... in. at.	\$
	Meter..... in. at.	\$
	Lbs. Br. Stone at.....	\$
	Lbs. Sand at.....	\$
	Bags Cement at.....	\$
	Paving Brick } Mack } at.....	\$
	Lead Joints at.....	\$
	Leadite Joints at.....	\$
1/1	Hrs. Foreman at.....	\$ 6.00
8	Hrs. Common Labor at.....	\$ 4.00
8	Hrs. Common Labor at.....	\$ 3.25
	Hrs. Mason at.....	\$
	Hrs. Mason's Helper at.....	\$
	Hrs. Compressor at.....	\$
	Compensation Ins.....	\$ 2.10
	Trucking.....	\$ 1.00
	Builders' Use of Water.....	\$
788		
	Total \$	199.00

Labor and Material Report

78-32 May 4 19 18

Mr. C. J. [unclear] St.



4" Main Elev. of Main at tap 5'

Gate at TAX ID # 303.13-17-4 Gate at

● Curb Box

Old Tap to
Be Duped