

LABOR AND MATERIALS

Copper / Lead	Connection	3/4	\$	3.87	
Curb	Cock Valve	3/4 in.	\$	3.62	
	T. S. & V.				
Service box	Short 3 1/2 X 4 1/2	Same	\$	—	
29 1/2 Old returned	Long 4 1/2 X 5 1/2				
29 1/2 Ft.	Copper	3/4 in.	\$	6.08	
	G. I. / C. I.				
Nipples	in. at		\$		
Bushings	to in. at		\$		
Inc'g	Red'g	to in. at	\$		
	Coupl'gs				
Union	in. at		\$		
Meter	in. at		\$		
Lead Joints	at		\$		
Compound Joints	at		\$		
Hrs. Water Maint. Man—1	at		\$		
5 Hrs. Water Maint. Man—2	at	1.07	\$	5.10	
27 Hrs. Labor—	at	91	\$	24.57	
Hrs. Labor—	at		\$		
Hrs. Compressor	at		\$		
Compensation Ins.	at \$ 2.18 per C.		\$.65	
Trucking			\$	2.00	
Pav't Patch			\$		
Tap by <i>Meyerson</i>			\$		
O'head			\$		
			\$	44.89	

58

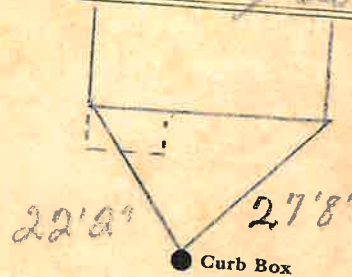
St. Walnut
Pt. Ave. No. 74

Name of Owner

Dora M. Meyerson

Labor and Mat'l. Report

May 20 19*49*



4 Main

Elev. of Main at tap... 5

Gate at ●

● Gate at

3/4" copper 29'4" to main

● Curb Box

TAX ID # 303.13-17-9

LSM-5C 5 15-48

(To be Billed)