

Labor and Materials

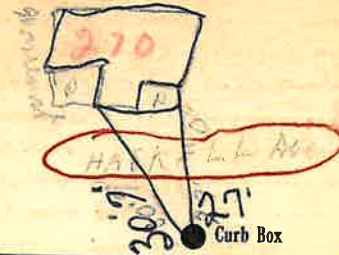
1	Copper } Connection <i>3/4</i>	\$ 1.33
	Lead }	
1	Curb { Cock Valve T.S.&V. } <i>3/4</i> in	\$ 1.58
1	Service Box { Short $3\frac{1}{2} \times 4\frac{1}{2}$ Long $4\frac{1}{2} \times 5\frac{1}{2}$ } Old returned { Buff. or Rdway }	\$ 1.36
7	Ft. <i>3/4</i> in { Copper Galv. Iron } Pipe at	\$ 67
	Cast Iron }	
	Nipples in. at	\$
	Bushings to in. at	\$
	Red'g } Couplings to in. at	\$
	Inc'g }	
	Union in. at	\$
	Meter in. at	\$
	Lbs. Br. Stone at	\$
	Lbs. Sand at	\$
	Bags Cement at	\$
	Paving Brick { Mack Red Asphalt } at	\$
	Lead Joints at	\$
	Leadite Joints at	\$
6	Hrs. Foreman at	\$ 3.75
1.7	Hrs. Common Labor at	\$ 7.25
	Hrs. Common Labor at	\$
	Hrs. Mason at	\$
	Hrs. Masons Helper at	\$
	Hrs. Compressor at	\$
	Compensation Ins	\$ 35
	Trucking	\$ 1.00
	Builders Use of Water <i>Patch</i>	\$ 5.00
Total		\$ 27.69

33-17

Labor and Material Report

1933

210
214 tap at 160' main at



6" Main

Elev. of Main at tap *57'*

Gate at *3/4" copper*

Gate at *7' to main*

● Curb Box

old tap shut off

Rap on Haskell

OK. (LH)

TAX ID# 303.18-15-20

74