

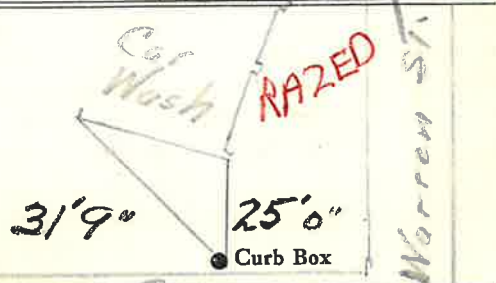
St.
Pl.
Warren St. Ave. No. 286

Name of Owner

David Vliet Enty

Labor and Mat'l. Report

March 9 1965



Peck Ave.
6" Main Elev. of Main at tap 4 1/2'

Gate at ●

● Gate at

1" copper 29' to MAIN

● Curb Box

LSM-5C-3-10-61

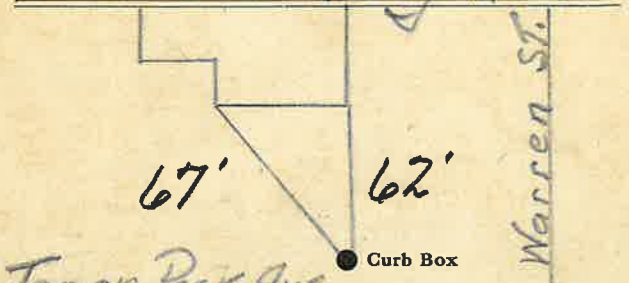
St.
Pl.
Warren St. Ave. No. 286

Name of Owner

3 Peck Ave
Covilla

Labor and Mat'l. Report

May 11 1953



Top on Peck Ave.
6" Main Elev. of Main at tap 5'

Gate at ●

● Gate at

● Curb Box

3/4" Tap shut off at curb
2/10/65 CR

LSM-5C 5 15-48

LABOR AND MATERIALS

1	Copper	Connection	1"	\$	
1	Lead	Cock or Valve	1 in.	\$	
1	Curb	T. S. & V.		\$	
1	Service box	Short 3 1/2 x 4 1/2		\$	
	Old returned	Long 4 1/2 x 5 1/2		\$	
		Buff or Rdway		\$	
29	Ft. 1	Copper	Pipe at	\$	
		G. I.		\$	
		C. I.		\$	
	Nipples	in. at		\$	
	Bushings	to in. at		\$	
	Red'g			\$	
	Inc'g	Coupl'gs to in. at		\$	
	Union	in. at		\$	
	Meter	in. at		\$	
	Lead Joints at			\$	
	Compound Joints at			\$	
	Maintenance Foreman			\$	
	Hrs. Water Maint. Man-1	at		\$	
	Hrs. Water Maint. Man-2	at		\$	
	Hrs. Garage Foreman	at		\$	
	Hrs. Labor	at		\$	
	Hrs. Compressor at			\$	
	Compensation Ins. at \$	per C		\$	
	Trucking			\$	
	Pay't Patch			\$	
	Tap made by Gifford			\$	
	7 C. March 9-63.			\$	
				\$	
	O'head			\$	
				\$	

LABOR AND MATERIALS

1	Copper	Connection	3/4"	\$	2.76
1	Lead	Cock	3/4"	\$	3.49
1	Curb	Valve		\$	
1	Service box	Short 3 1/2 x 4 1/2		\$	4.74
	Old returned	Long 4 1/2 x 5 1/2		\$	
		Buff or Rdway		\$	
25	Ft. 3/4	Copper	Pipe at	\$	9.50
		G. I.		\$	
		C. I.		\$	
	Nipples	in. at		\$	
	Bushings	to in. at		\$	
	Red'g			\$	
	Inc'g	Coupl'gs to in. at		\$	
	Union	in. at		\$	
	Meter	in. at		\$	
	Lead Joints at			\$	
	Compound Joints at			\$	
	Hrs. Water Maint. Man-1	at		\$	
1.0	Hrs. Water Maint. Man-2	at	1.24	\$	12.40
32	Hrs. Labor	at	1.13	\$	36.16
	Hrs. Labor	at		\$	
	Hrs. Compressor at			\$	
	Compensation Ins. at \$	4.406 per C		\$	2.14
	Trucking			\$	1.50
	Pay't Patch			\$	13.50
	Tap May 11-53 Gifford			\$	
				\$	
	O'head			\$	
				\$	

72.19

\$85.69