

### Labor and Materials

Copper } Connection.....	3	\$ 1.25
Lead } .....	3	\$ 1.70
Curb { Cock Valve T.S. & V. } .....	1	\$ 1.70
Service Box { Short 8 1/2 x 4 1/2 Old returned { Long 4 1/2 x 5 1/2 Both or Return } .....	1	\$ 1.45
6 Ft. 3/4 in. { Copper Galv. Iron Cast Iron } Pipe at 13 1/2		\$ 81
Nipples .....	in. at	\$
Bushings .....	to .....	in. at \$
Red'g Inc'g } Couplings .....	to .....	in. at \$
Union .....	in. at	\$
Meter .....	in. at	\$
Lbs. Br. Stone at .....		\$
Lbs. Sand at .....		\$
Bags Cement at .....		\$
Paving Brick { Mack Red Asphalt } at .....		\$
Lead Joints at .....		\$
Leadite Joints at .....		\$
7 Hrs. Foreman at .....	62.12	\$ 1.25
7 Hrs. Common Labor at .....	45	\$ .90
Hrs. Common Labor at .....		\$
Hrs. Mason at .....		\$
Hrs. Masons Helper at .....		\$
Hrs. Compressor at .....		\$
Compensation Ins .....		\$ .08
Trucking .....		\$ 1.-
Builders Use of Water .....		\$

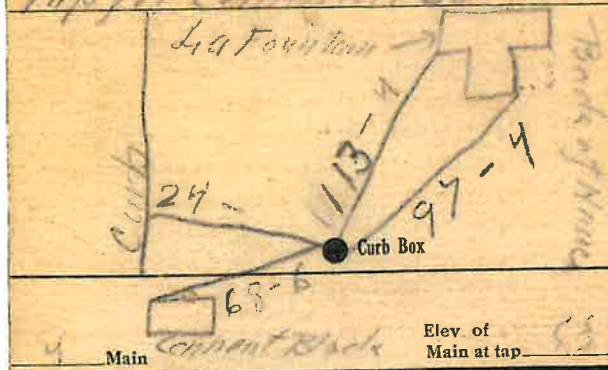
Total \$ 8.44

1935-30

Labor and Material Report

Apr 24 1935

Tap for Comment Co



Gate at  
3/4" COPPER

Gate at  
6' to MAIN

● Curb Box

old to be dug up  
To be paid for by  
Comment Co.

TH