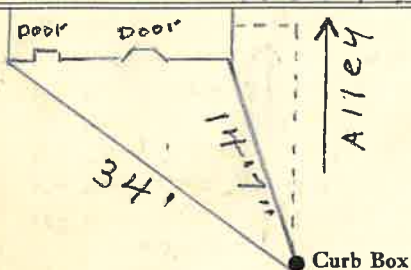


Warren

St. Pt. Ave. No. 22

Name of Owner James Scardoulis
Kong Chow Rest.

Labor and Mat'l. Report Nov. 23 19 59



10" Main

Elev. of Main at tap 5'

Gate at

Gate at

3/4" Copper

18' to main

Curb Box

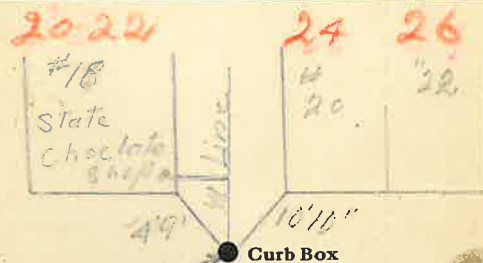
Warren

St. Pt. Ave. No. 18-20

Name of Owner

Waltham Store in rear

Labor and Mat'l. Report April 15 19 41



Main

Elev. of Main at tap

Gate at

20 Warren

Gate at

TAX ID # 303.17-16-13

Curb Box

Labor and Material Report

Dec 15 ²⁹⁻²⁶ 1931

1' Extension at 20 Warren st



10" Main

Elev. of Main at tap 4 ft

Gate at ●

● Gate at

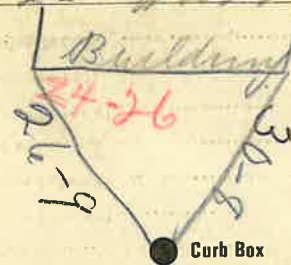
8' to MAIN

● Curb Box

Labor and Material Report

²⁴⁻²⁶ July 13 1926

20-22 - Warren St



10" Main

Elev. of Main at tap 4'

Gate at ●

● Gate at

5-2-69. ● Curb Box

Shot off at Curb.
Urban Renewal
To be razed.

Labor and Materials

Copper } Connection.....	\$
Lead } Connection.....	\$
Curb { Cock Valve T. S. & V. } in.....	\$
Service Box { Short 3 3/4 x 1 1/2 Old returned { Long 4 1/2 x 5 1/2 Buff. or Rdway } }.....	\$
Ft. in. { Copper Galv. Iron } Pipe at.....	\$
Cast Iron } Pipe at.....	\$
Nipples..... in. at.....	\$
Bushings..... to..... in. at.....	\$
Red'g } Couplings..... to..... in. at.....	\$
Inc'g } Couplings..... to..... in. at.....	\$
Union..... in. at.....	\$
Meter..... in. at.....	\$
Lbs. Br. Stone at.....	\$
Lbs. Sand at.....	\$
Bags Cement 'at.....	\$
Paving Brick { Mack Red Asphalt } at.....	\$
Lead Joints at.....	\$
Leadite Joints at.....	\$
Hrs. Foreman at.....	\$
Hrs. Common Labor at.....	\$
Hrs. Common Labor at.....	\$
Hrs. Mason at.....	\$
Hrs. Mason's Helper at.....	\$
Hrs. Compressor at.....	\$
Compensation Ins.....	\$
Trucking.....	\$
Builders' Use of Water.....	\$
Total \$.....	

Labor and Materials

Copper } Connection.....	\$
Lead } Connection.....	\$
Curb { Cock Valve T. S. & V. } in.....	\$
Service Box { Short 3 3/4 x 4 3/4 Old returned { Long 4 1/2 x 5 1/2 Buff. or Rdway } }.....	\$
Ft. in. { Copper Galv. Iron } Pipe at.....	\$
Cast Iron } Pipe at.....	\$
Nipples..... in. at.....	\$
Bushings..... to..... in. at.....	\$
Red'g } Couplings..... to..... in. at.....	\$
Inc'g } Couplings..... to..... in. at.....	\$
Union..... in. at.....	\$
Meter..... in. at.....	\$
Lbs. Br. Stone at.....	\$
Lbs. Sand at.....	\$
Bags Cement at.....	\$
Paving Brick { Mack Red Asphalt } at.....	\$
Lead Joints at.....	\$
Leadite Joints at.....	\$
Hrs. Foreman at.....	\$
Hrs. Common Labor at.....	\$
Hrs. Common Labor at.....	\$
Hrs. Mason at.....	\$
Hrs. Mason's Helper at.....	\$
Hrs. Compressor at.....	\$
Compensation Ins.....	\$
Trucking.....	\$
Builders' Use of Water.....	\$
Total \$.....	