

74-76
 DAILY REPORT *Oct 28* 19*25*

49 Warren St
 TAP Warren
 74-76

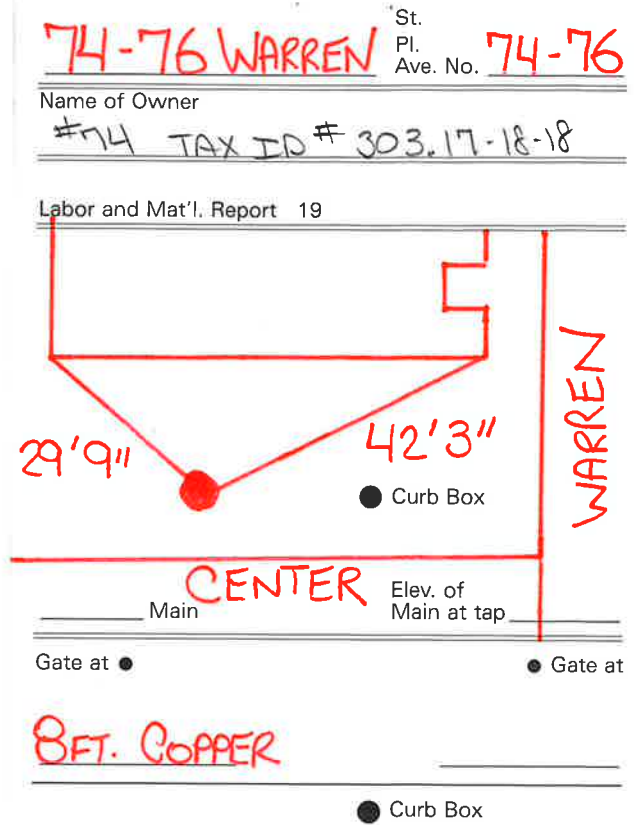
29'9" 42'3"
 Center St. Warren St.

1 Brass Connection
 1 Curb cock
 1 Curb box *short*
 1 $\frac{3}{4} \times \frac{1}{2}$ Pushing *short*

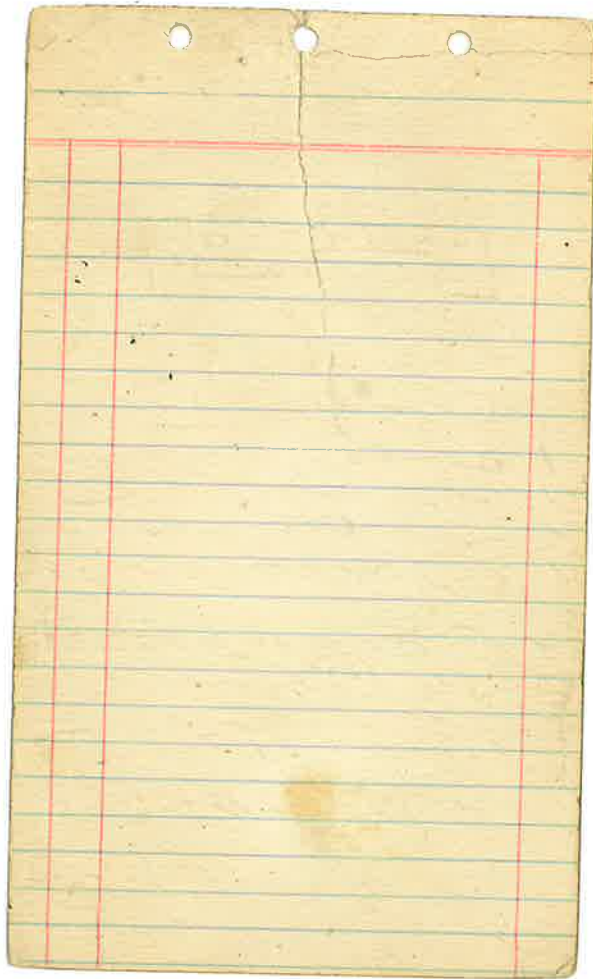
8 FT of Copper pipe

TAP ON CENTER ST
 HOUSE ON WARREN ST

4w Forman
 9h Enbar



House ON WARREN ST.
 Tap ON Center St.



LABOR AND MATERIALS

Copper } Connection _____ \$ _____
Lead }
Curb } Cock _____ in. \$ _____
Valve }
T.S. & V. }

Service box { Short 3-1/2 x 4-1/2 } _____ \$ _____
Old returned { Long 4-1/2 x 5-1/2 }

Ft: _____ in. { Copper } Pipe at _____ \$ _____
G.I.
C.I. }

Nipples _____ in. at _____ \$ _____

Bushings _____ to _____ in. at _____ \$ _____

Red'g _____

Inc'g _____

Union _____ in. at _____ \$ _____

Meter _____ in. at _____ \$ _____

_____ \$ _____

Compound Joints at _____ \$ _____

Maintenance Foreman _____ \$ _____

Hrs. Water Maint. Man - 1 at _____ \$ _____

Hrs. Water Maint. Man - 2 at _____ \$ _____

Hrs. Garage Foreman _____ at _____ \$ _____

Hrs. Labor _____ at _____ \$ _____

Hrs. Compressor at _____ \$ _____

_____ \$ _____

Trucking _____ \$ _____

Pav't Patch _____ \$ _____

_____ \$ _____

_____ \$ _____

_____ \$ _____

_____ \$ _____

_____ \$ _____

_____ \$ _____