

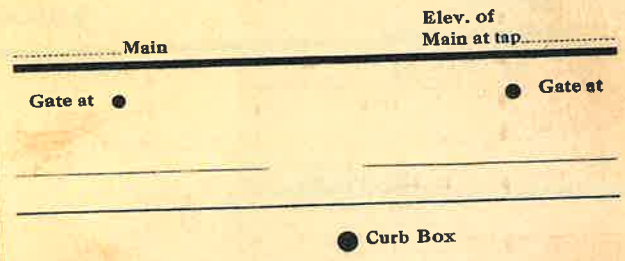
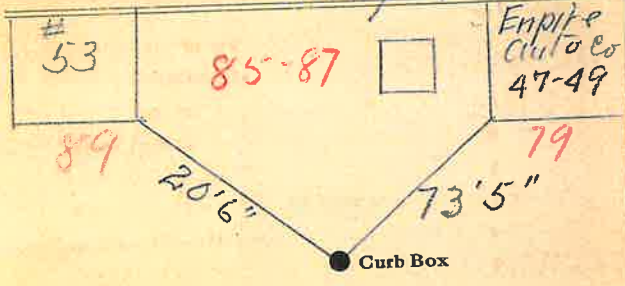
LABOR AND MATERIALS

Copper } Connection \$
 Lead }
 Curb { Cock Valve } in. \$
 { T. S. & V. }
 Service Box { Short 3 1/2 x 4 1/2 } \$
 Old returned { Long 4 1/2 x 5 1/2 }
 { Buffer Rdway }
 Ft. in. { Copper } Pipe at \$
 { Galv Iron }
 { Cast Iron }
 Nipples in. at \$
 Bushings to in. at \$
 Red'g } Couplings to in. at \$
 Inc'g }
 Union in. at \$
 Meter in. at \$
 Lead Joints at \$
 Leadite Joints at \$
 Hrs. Foreman at \$
 Hrs. Chauffeur at \$
 Hrs. Tapper at \$
 Hrs. Labor at \$
 Hrs. Labor at \$
 Hrs. Compressor at \$
 Compensation Ins. \$
 Trucking \$
 Builders Use of Water \$
 \$
 \$
 \$
 \$
 \$

St. *85-87*
 Pt.
 Ave. No. *51*

Name of Owner
Warren
old Howard Home (Razed)

Labor and Mat'l. Report *May 19* 19*44*



this Tap Shut off at Main