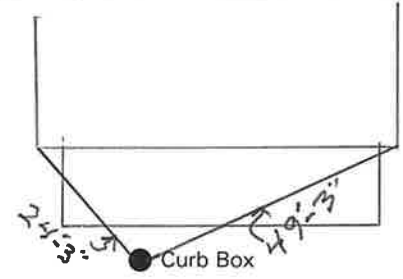


WARREN St.
Pt. Ave. No. 90-92

Name of Owner
TAX ID # 303.17-18-21

Labor and Mat'l. Report 19

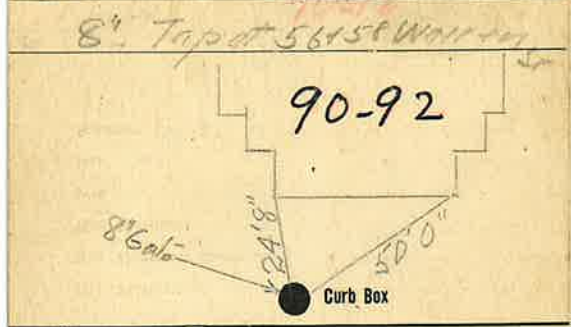


16 Main Elev. of Main at tap 5

Gate at ● Gate at ●

● Curb Box

Labor and Material Report April 3 19 25



10" Main Elev. of Main at tap 5'

Gate at ● Gate at ● 8' 8" to main

● Curb Box

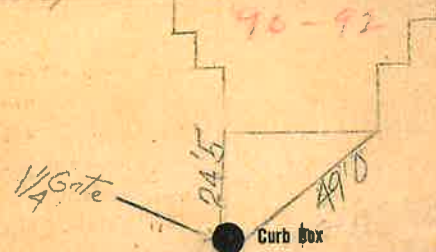
Labor and Materials

| | | | |
|-----|------------------------|---------------------------------|----|
| 1 | Lead Connection | 1/4 | \$ |
| 1 | Curb Cock | 1/4 | \$ |
| 1 | Service Box | { Short 3 1/2 x 4 1/2 for Valve | \$ |
| | Old returned | { Long 4 1/2 x 5 1/2 Buffalo | \$ |
| | 4 in. G. I. Pipe | at | \$ |
| 1 | Nipples | 1/4 in. at | \$ |
| | Bushings | to in. at | \$ |
| | Red'g Coup | to in. at | \$ |
| | Inc'g Coup | to in. at | \$ |
| | Union | in. at | \$ |
| | Meter | in. at | \$ |
| | Cu. Yds. Br. Stone | at | \$ |
| | Cu. Yds. Sand | at | \$ |
| | Bags Cement | at | \$ |
| | Paving Brick | { Mack Red Asphalt } at | \$ |
| 4 | Hrs. Foreman | at | \$ |
| 10 | Hrs. Common Labor | at | \$ |
| | Hrs. Mason | at | \$ |
| | Hrs. | at | \$ |
| | Hrs. | at | \$ |
| No. | Builders' Use of Water | at | \$ |
| | TRUCK 100 | at | \$ |
| | | at | \$ |
| | | at | \$ |
| | | at | \$ |
| | Total | \$ 19.28 | |

Labor and Material Report

1928

1 1/2" Tap at 56-58 Warren St



Main Elev. of Main at tap 5'
Gate at ● Gate at ●

● Curb Box

This lap is Taped off of 8" pipe at curb 1 1/2 ft. Back of 8" Gate main side.
Dug up Dec 12-38 and Found 1/4 Turned on at Bullhead