

## LABOR AND MATERIALS

Copper	Lead	Connection			\$
1	Curb	{ Cock Valve T-S. & V. }	5/8 in.		\$
1	Service Box Old returned	{ Short 3 1/2 x 4 1/2 Long 4 1/2 x 5 1/2 Buff. or Rdway }			\$
7	Ft.	3/4 in.	{ Copper Galv Iron Cast Iron }	Pipe at	\$
	Nipples		in. at		\$
	Bushings		to in. at		\$
	Red'g Inc'g	{ Couplings	to in. at		\$
	Union		in. at		\$
	Meter		in. at		\$
	Lead Joints		at		\$
	Leadite Joints		at		\$
	Hrs. Foreman		at		\$
	Hrs. Chauffeur		at		\$
	Hrs. Tapper		at		\$
	Hrs. Labor		at		\$
	Hrs. Labor		at		\$
	Hrs. Compressor		at		\$
	Compensation Ins.				\$
	Trucking				\$
	Builders Use of Water				\$
					\$
					\$
					\$
					\$
					\$

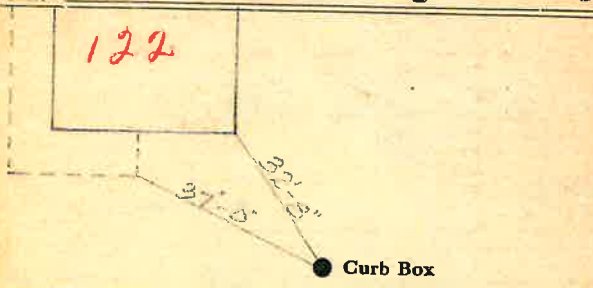
St.  
Pl. 122  
Ave. No. 74

Warren

Name of Owner

Coffin

Labor and Mat'l. Report Oct. 18 1916



Main Elev. of Main at tap

Gate at ● ● Gate at

3/4" Copper 7" to MAIN

● Curb Box

TAX ID# 303.17-19-23