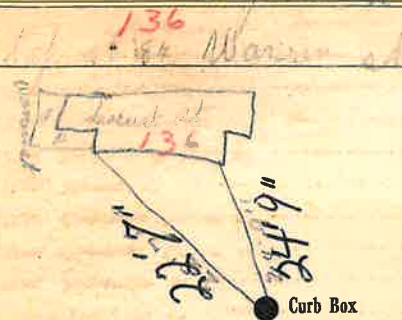


Labor and Materials

.....	Copper	Connection.....	1"	\$ 3.50
.....	Lead				
.....	Curb	Cockin	1"	\$ 3.06
.....	Service Box	Short 3 1/2 x 4 1/2			\$ 1.54
.....	Old returned	Long 4 1/2 x 5 1/2			
.....		Buff. or Redway			
25	Ft.	1" in.	Copper	Pipe at 72	\$ 5.75
.....			Cast Iron		
.....			Cast Iron		
.....	Nipplesin. at			\$
.....	Bushingsto	in. at		\$
.....	Red'g	Couplings.....	to	in. at	\$
.....	Inc'g				\$
.....	Unionin. at			\$
.....	Meterin. at			\$
.....	Lbs. Br. Stone	at			\$
.....	Lbs. Sand	at			\$
.....	Bags Cement	at			\$
.....	Paving Brick	Mack	at		\$
.....		Red			\$
.....		Asphalt			\$
.....	Lead Joints	at			\$
.....	Leadite Joints	at			\$
6	Hrs.	FIC Foreman	at	6.25	\$ 5.00
7	Hrs.	Common Labor	at	50	\$ 3.50
8	Hrs.	Common Labor	at	45	\$ 3.60
.....	Hrs. Mason	at			\$
.....	Hrs. Masons Helper	at			\$
.....	Hrs. Compressor	at			\$
.....	Compensation Ins				\$ 0.43
.....	Trucking				\$ 7-
.....	Builders Use of Water	Part. Patch			\$ 5-
Total \$					33.38

32 34

Labor and Material Report June 21 1922



Main Elev. of Main at tap 5 1/2
 Gate at 1" Copper 25' to MAIN Gate at

● Curb Box
 Old tap to be shut off from main

TAX ID # 303.17-20-14

Handwritten initials or signature.