

LABOR AND MATERIALS

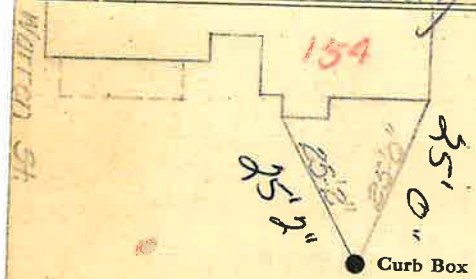
1	Copper Lead	Connection	1"	\$	2.14
1	Curb	{ Cock Valve T. S. & V. }	1" in.	\$	2.61
1	Service Box Old returned	{ Short 3 1/2 x 4 1/2 Long 4 1/2 x 5 1/2 Buff. or Rdway }		\$	1.60
23	Ft. 1 in.	{ Copper Galv Iron Cast Iron }	Pipe at 22	\$	5.06
	Nipples	in. at		\$	
	Bushings	to in. at		\$	
	Red'g Inc'g	{ Couplings to in. at }		\$	
	Union	in. at		\$	
	Meter	in. at		\$	
	Lead Joints	at		\$	
	Leadite Joints	at		\$	
	Hrs. Foreman	at		\$	
3	Hrs. Chauffeur	at	6 2/3	\$	1.88
	Hrs. Tapper	at		\$	
10	Hrs. Labor	at	45	\$	4.50
	Hrs. Labor	at		\$	
	Hrs. Compressor	at		\$	
	Compensation Ins.			\$	2.0
	Trucking			\$	1.0
	Builders Use of Water	1/2 Patch (Sewer)		\$	2.50
	Tap by Person			\$	
				\$	
				\$	
				\$	
				\$	
				\$	21.49

8 6 - - 1940

St. 159
Pl.
Ave. No. 94

Name of Owner TAX ID # 303.17-21-16
Du Zulo

Labor and Mat'l. Report Aug 19 1940



6 Main Keenan St. Elev. of Main at tap 5

Gate at ● Gate at ●

1" Copper

● Curb Box

23' to MAIN
TAP ON KEENAN
NOT WARREN
old to be done