

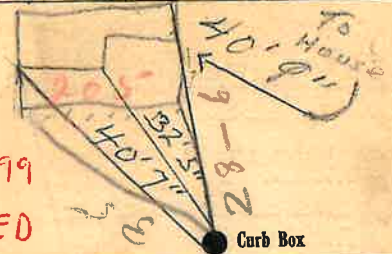
Labor and Materials

Copper	} Connection.....	\$1.48	
Lead			
Curb	} Cock } Valve } T.S.&V. in	\$1.79	
Service Box			
Old returned	} Short 3 1/2 x 4 1/2 } Long 4 1/2 x 5 1/2 } Buff. or Rawls	\$1.30	
36 Ft.			
..... in.	} Copper } Galv. Iron } Cast Iron	Pipe at 3/4 \$6.48	
Nipples			
..... in. at		\$.....	
Bushings to in. at	\$.....	
Red'g	} Couplings..... to in. at	\$.....	
Inc'g			
Union in. at	\$.....	
Meter in. at	\$.....	
Lbs. Br. Stone	at	\$.....	
Lbs. Sand	at	\$.....	
Bags Cement	at	\$.....	
Paving Brick	} Mack } Red } Asphalt	at	
Lead Joints		at	\$.....
Leadite Joints		at	\$.....
3 Hrs. Foreman	at	\$1.88	
24 Hrs. Common Labor	at	\$10.80	
Hrs. Common Labor	at	\$.....	
Hrs. Mason	at	\$.....	
Hrs. Masons Helper	at	\$.....	
7 Hrs. Compressor	at	\$1.75	
Compensation Ins		\$.....	
Trucking		\$1.00	
Builders Use of Water		\$9.00	
Total		\$35.87	

Labor and Material Report

1912

5-21-99
127 1/2 Warren St



DEC. '99
RAZED

10 Main

Elev. of Main at tap 4 1/2

Gate at ●

● Gate at

● Curb Box
36' to MAIN

C.R. [Signature]