

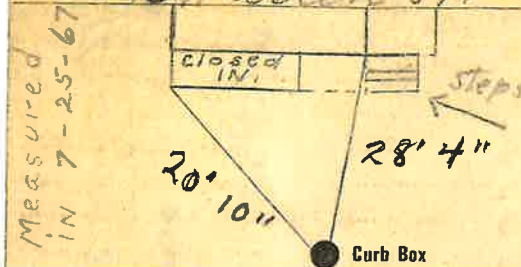
Labor and Materials

1	Copper } Connection	7	\$ 3.20
	Lead } Cock		
1	Curb } Valve	3/8 in.	\$ 1.00
		T. S. & V.	
1	Service Box	Short 3 1/2 x 4 1/2	\$ 1.30
	Old returned	Long 4 1/2 x 5 1/2	
		Buff. or Rdway	
1.4	Ft. 3/4 in. } Copper	Pipe at	\$ 2.20
		Galv. Iron	
		Cast Iron	
	Nipples	in. at	\$
	Bushings	to in. at	\$
1	Red'g } Couplings	3/4 to in. at	\$ N
	Inc'g }		
	Union	in. at	\$
	Mefer	in. at	\$
	Lbs. Br. Stone	at	\$
	Lbs. Sand	at	\$
	Bags Cement	at	\$
	Paving Brick	{ Mack Red Asphalt } at	\$
	Lead Joints	at	\$
	Leadite Joints	at	\$
3	Hrs. Foreman	at 6 2 1/2	\$ 18.5
3	Hrs. Common Labor	at 50	\$ 15.0
3	Hrs. Common Labor	at 40 1/2	\$ 12.2
	Hrs. Mason	at	\$
	Hrs. Mason's Helper	at	\$
2	Hrs. Compressor	at 11.0	\$ 22.5
	Compensation Ins.		\$ 1.2
	Trucking		\$ 1.00
	Builders' Use of Water		\$
Total			\$ 105.82

Labor and Material Report

April 16 19 39

10146 Warren St.



10" Main

Elev. of Main at tap 5'

Gate at

3/4" Copper

Gate at

10' to MAIN

● Curb Box

new house
new top

TAX ID # 303.18-18-5