

Labor and Materials

1	Copper Lead	Connection	3/4		\$	1.46
1	Curb	Cock Valve T-S. & V.	3/4 in.		\$	1.93
	Service Box Old returned		Short 3 1/2 x 4 1/2 Long 4 1/2 x 5 1/2 Buff. or Rdway		\$	1.77
19 40	Ft.	3/4 in.		Copper Galv Iron Cast Iron	Pipe at	\$ 2.22
	Nipples	in. at				\$
	Bushings	to	in. at			\$
	Red'g Inc'g	Complings	to	in. at		\$
	Union	in. at				\$
	Meter	in. at				\$
	Lead Joints	at				\$
	Leadite Joints	at				\$
	Hrs. Foreman	at				\$
2 1/2	Hrs. Chauffeur	at				\$ 1.57
1 1/2	Hrs. Tapper	at				\$.94
6 1/2	Hrs. Labor	at				\$ 2.93
	Hrs. Labor	at				\$
	Hrs. Compressor	at				\$
	Compensation Ins.					\$.17
	Trucking					\$ 1.-
	Builders Use of Water					\$
						\$
						\$
						\$
	Tap by <i>Penn</i>					\$ 13.97

151-1937

E 20

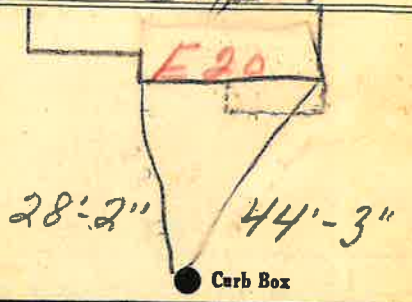
St.
Pl.

Washington Ave. No. *32*

Name of Owner *TAX ID # 302.20-18-25*

Potter

Labor and Mat'l. Report *Sept 1* 19*37*



Main Elev. of Main at tap *5*

Gate at • *3/4" copper* Gate at • *19' to main*

● Curb Box

Old tap line

TH