

## Labor and Materials

1	Copper	Connection	3/4"	.....	\$ 1.26
1	Lead				
1	Curb	Cock Valve T. S. & V.	3/4" in	.....	\$ 1.93
1	Service Box				
19	Old returned				
		Short 3 1/2 x 4 1/2	Long 4 1/2 x 5 1/2	} Buff. or Rdway	\$ 1.77
	19 Ft.	Copper	Pipe at	.....	\$ 2.17
		Galv Iron			
		Cast Iron			
	Nipples	in. at	.....	\$	
	Bushings	to	in. at	.....	\$
	Red'g	Couplings	to	in. at	\$
	Inc'g				
	Union	in. at	.....	\$	
	Meter	in. at	.....	\$	
	Lead Joints	at	.....	\$	
	Leadite Joints	at	.....	\$	
	Hrs. Foreman	at	.....	\$	
2 1/2	Hrs. Chauffeur	at	.....	\$ 1.57	
1 1/2	Hrs. Tapper	at	.....	\$ 98	
6 1/2	Hrs. Labor	at	.....	\$ 2.93	
	Hrs. Labor	at	.....	\$	
	Hrs. Compressor	at	.....	\$	
	Compensation Ins.		.....	\$ .17	
	Trucking		.....	\$ 1.00	
	Builders Use of Water		.....	\$	
	Trip by P.		.....	\$	
					\$ 14.19

155-1937

St. *E 28*  
Pl:  
Ave. No. *40*

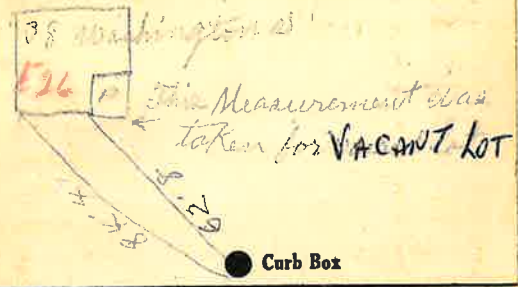
Name of Owner

*Mrs. Brown*

Labor and Mat'l. Report

*Sept 18*

19*37*



● Curb Box

Shut off at Curb - 7-17-73

Main Elev. of Main at top *118*

Gate at ● *19' to MAIN* ● Gate at

● Curb Box

IN Side Walk

*79'-3"*

