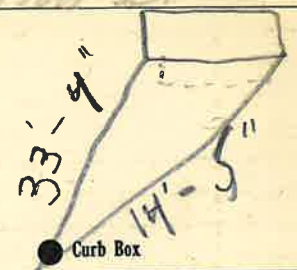


96 34  
 Labor and Material Report Sept 20 1934

10 Washington St

W 7



4 Main Elev. of Main at tap 5

Gate at ● Gate at ●

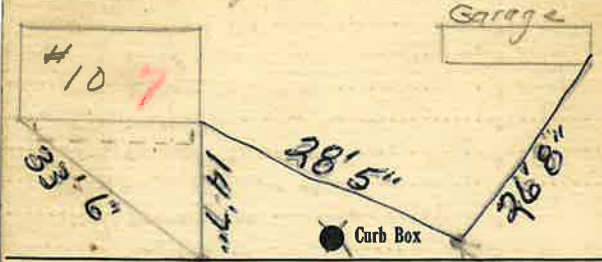
● Curb Box

old Taps shut off at  
 main

W 7

107  
 Labor and Material Report Oct 28 1922

#10 Washington St



Main Elev. of Main at tap Garage Curb Box

Gate at ● Gate at ●  
 3/4" COPPER 22' to MAIN

● Curb Box

Measurement to Curb Boxes  
 for House + Garage at  
 #10 Washington St

Shut off at Curb  
 MAY-9-1913

10/22  
 Not on map

Labor and Materials

1	Copper	Connection	4	\$ 1.50
1	Curb	Cock Valve	3/4 in	\$ 1.70
1	Service Box	Short 3 1/2 x 4 1/2		\$ 1.44
	Old returned	Long 4 1/2 x 5 1/2		
		Buff. or Rdway		
22	Ft.	Copper Galv. Iron Cast Iron	in	Pipe at \$ 4.18
	Nipples		in. at	\$
	Bushings		to in. at	\$
	Red'g Inc'g	Couplings	to in. at	\$
	Union		in. at	\$
	Meter		in. at	\$
	Lbs. Br. Stone		at	\$
	Lbs. Sand		at	\$
	Bags Cement		at	\$
	Paving Brick	Mack Red Asphalt	at	\$
	Lead Joints		at	\$
	Leadite Joints		at	\$
4	Hrs. Foreman		at 62 1/2	\$ 2.50
11	Hrs. Common Labor		at 45	\$ 4.95
	Hrs. Common Labor		at	\$
	Hrs. Mason		at	\$
	Hrs. Masons Helper		at	\$
	Hrs. Compressor		at	\$
	Compensation Ins			\$ 0.77
	Trucking			\$ 1.
	Builders Use of Water			\$ 5.

Total \$ 22.54

Labor and Materials

	Copper	Connection		\$
	Lead			\$
	Curb	Cock Valve T.S.&V.	in	\$
	Service Box	Short 3 1/2 x 4 1/2		\$
	Old returned	Long 4 1/2 x 5 1/2		\$
		Buff. or Rdway		\$
	Ft.	Copper Galv. Iron Cast Iron	in	Pipe at \$
	Nipples		in. at	\$
	Bushings		to in. at	\$
	Red'g Inc'g	Couplings	to in. at	\$
	Union		in. at	\$
	Meter		in. at	\$
	Lbs. Br. Stone		at	\$
	Lbs. Sand		at	\$
	Bags Cement		at	\$
	Paving Brick	Mack Red Asphalt	at	\$
	Lead Joints		at	\$
	Leadite Joints		at	\$
	Hrs. Foreman		at	\$
	Hrs. Common Labor		at	\$
	Hrs. Common Labor		at	\$
	Hrs. Mason		at	\$
	Hrs. Masons Helper		at	\$
	Hrs. Compressor		at	\$
	Compensation Ins			\$
	Trucking			\$
	Builders Use of Water			\$

Total \$