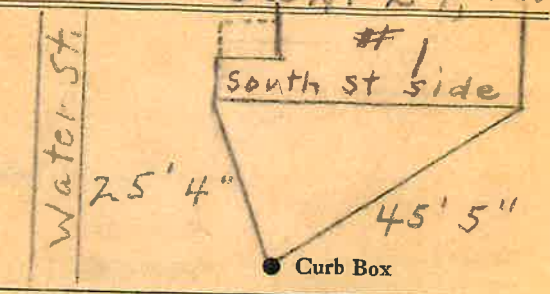


LABOR AND MATERIALS

1	Copper Lead	{ Connection	3/4"	\$ 276
1	Curb	{ Cock Valve T.S. & V.	3/4 in.	\$ 349
1	Service box	{ Short 3 1/2 x 4 1/2		
	Old returned	{ Long 4 1/2 x 5 1/2		
		{ Buff or Rdway		\$ 474
26 Ft.	3/4 in.	{ Copper G.I. C.I.	Pipe at 35	\$ 910
	Nipples	in. at		\$
	Bushings	to in. at		\$
	Red'g Inc'g	{ Coupl'gs to in. at		\$
	Union	in. at		\$
	Meter	in. at		\$
	Lead Joints	at		\$
	Compound Joints	at		\$
3	Hrs. Water Maint. Man-1	at 1 3/4		\$ 400
5	Hrs. Water Maint. Man-2	at 1 1/2		\$ 615
12	Hrs. Labor	at 1.02		\$ 1224
	Hrs. Labor	at		\$
3	Hrs. Compressor	at 1.50		\$ 450
	Compensation Ins.	at \$ 3.706 per C.		\$ 93
	Trucking			\$ 100
	Pav't Patch			\$
	O'head			\$
	Tap by Gifford			\$

Water St. Ave. No. 1
 Name of Owner Carpenter

Labor and Mat'l. Report Jan. 29, 1952



6" Main Elev. of Main at tap 6'

Gate at ● Gate at ●
 3/4 copper 26' to main

● Curb Box
 This tap on South St. Side.
 TAX ID# 309.16-3-11