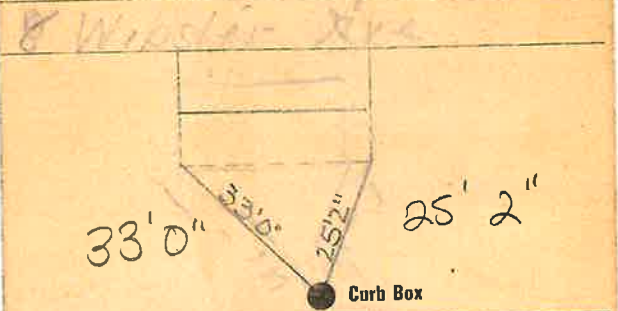


### Labor and Materials

Copper	Connection	3	\$ 3.20
Lead			
Curb	Cock	4	\$ 1.00
	Valve		
	P.S. Box	4	
Service Box	Short 3/8 x 1/2		\$ 1.20
Old returned	Long 4/8 x 5/8		
	Buff. or Rdway		
8 Ft.	Copper	3	\$ 1.76
	Cast Iron	4	
	Pipe at		
	Nipples		\$
	Bushings		\$
	Red'g		\$
	Inc'g		\$
	Couplings		\$
	Union		\$
	Meter		\$
	Lbs. Br. Stone at		\$
	Lbs. Sand at		\$
	Bags Cement at		\$
	Paving Brick		\$
	Lead Joints at		\$
	Leadite Joints at		\$
2	Hrs. Foreman at		\$ 1.25
3	Hrs. Common Labor at		\$ 1.50
2	Hrs. Common Labor at		\$ 1.25
	Hrs. Mason at		\$
	Hrs. Mason's Helper at		\$
	Hrs. Compressor at		\$
	Compensation Ins		\$ 1.1
	Trucking		\$ 1.00
	Builders' Use of Water		\$

Total \$ 113.4.

25-130  
Labor and Material Report Sept 26 1924



12 Main Elev of Main at tap 41

Gate at 3/4" Copper Gate at 8' to MAIN

Curb Box

New House

Florence Wootton

TAX ID# 302.11-3-21