

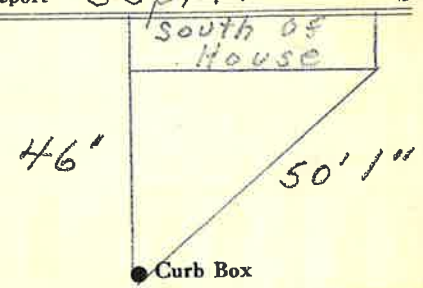
LABOR AND MATERIALS

1	Copper	} Connection	3/4"	\$	
1	Lead				
1	Curb	} Cock Valve	3/4 in.	\$	
					T.S. & V.
1	Service box	} { Short 3 1/2 x 4 1/2 Long 4 1/2 x 5 1/2 Buff or Rdway		\$	
	Old returned				
9	Ft. 3/4 in.	} { Copper G.I. C.I.	} Pipe at	\$	
	Nipples				in. at
	Bushings				to in. at
	Red'g	} Coupl'gs	to in. at	\$	
	Inc'g				
	Union	in. at	\$		
	Meter	in. at	\$		
	Lead Joints	at	\$		
	Compound Joints	at	\$		
	Maintenance Foreman		\$		
	Hrs. Water Maint. Man-1	at	\$		
	Hrs. Water Maint. Man-2	at	\$		
	Hrs. Garage Foreman	at	\$		
	Hrs. Labor	at	\$		
	Hrs. Compressor	at	\$		
	Compensation Ins.	at \$ per C	\$		
	Trucking		\$		
	Pav't Patch		\$		
	Tap by Gissard & Co.		\$		
	10-22-58.		\$		
	O'head		\$		
			\$		

✓  
 St. \_\_\_\_\_  
 Pl. \_\_\_\_\_  
 Ave. No. 30

Name of Owner Chase

Labor and Mat'l. Report Sept. 22 1958



12" Main Elev. of Main at tap 3 1/2"

Gate at • Gate at •  
 9' to MAIN

• Curb Box  
 House faces  
 North Rd.  
 2 North Rd?