

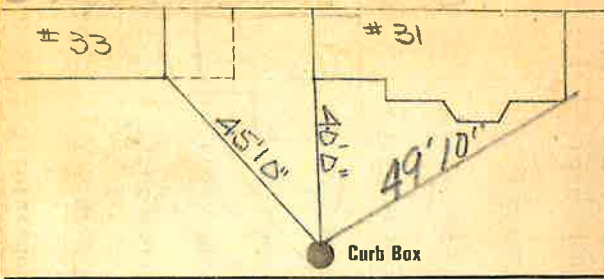
Labor and Materials

1	Copper } Connection	3	\$ 2.70
1	Curb } Cock Valve } in.	3	\$ 2.39
1	Service Box } Short 3/4x1 1/2 } Old returned } Long 4x5 1/2 } } Buff. or Rwyway }		\$ 1.45
86	Ft. in. } Copper } } Galv Iron } } Cast Iron }	3	\$ 9.72
	Nipples..... in. at.....		\$
	Bushings..... to..... in. at.....		\$
	Red'g } Couplings..... to..... in. at.....		\$
	Inc'g }		\$
	Union..... in. at.....		\$
	Meter..... in. at.....		\$
	Lbs. Br. Stone at.....		\$
	Lbs. Sand at.....		\$
	Bags Cement at.....		\$
	Paving Brick } Mack } } Red } } Asphalt }		\$
	Lead Joints at.....		\$
	Leadite Joints at.....		\$
7	Hrs. Foreman at.....	1.25	\$
7	Hrs. Common Labor at.....	3.15	\$
	Hrs. Common Labor at.....		\$
	Hrs. Mason at.....		\$
	Hrs. Mason's Helper at.....		\$
	Hrs. Compressor at.....		\$
	Compensation Ins.....	14	\$
	Trucking.....	1	\$
	Builders' Use of Water..... Patch	5	\$
	Total	26.50	\$

30-24

Labor and Material Report

18 19 37



12 Main Elev of Main at tap 4

Gate at ● ● Gate at

36' to MAIN

● Curb Box

Handwritten signature

L.B. Hartman

TAX ID # 302.11-6-10